

Overview

Painless Upgrading your Network Connection to 10G Super High speed Web Management Switch

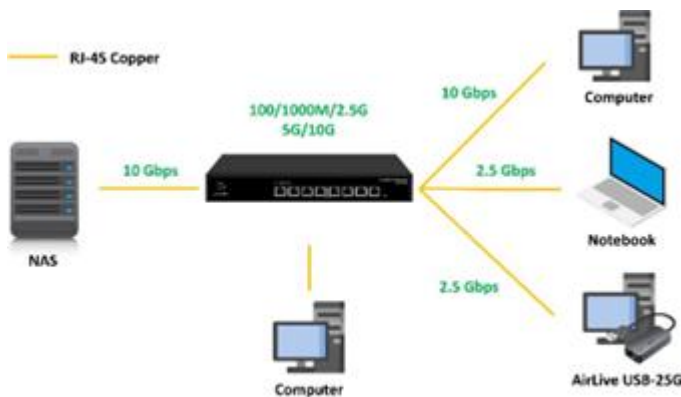
The AirLive Multi-Giga switch, is a Web Managed switch, which supports 8 RJ45 ports for delivering up to 10Gbps extra high-speed connection on RJ-45. Each port can auto-adaptively deliver speed at 100M/1000M or 2.5G/5G/10G to connective devices. Supports WEB Management function and is easy to manage and maintain. The easy to operate the switch has several functions like VLAN setting for a more secure connection. QoS to have more control of the bandwidth and many more like, IGMP, Loop Prevention, Port-Base Mirroring, Port Isolation, Bandwidth Control, Security (MAC Address /table /search / static MAC; Storm control and more. With the 10G multi-Giga switch, you can connect to a variety of 10GbE-enabled devices, such as NAS | NVR | PC | Server , for enjoying faster experience and handle bandwidth-hungry applications. Designed in a slim sized solid housing, it's an affordable, space-saving solution suitable to Home and SMB network applications.



100/1000M/2.5G/5G/10G RJ-45 Port

Features and Specifications

- 8 x 10/100/1000M/2.5G/5G/10G RJ45
- Web Smart Management
- QoS; Priority management
- VLAN: enhanced security and performance
- All ports at Multi Gigabit high speed, auto-negotiation
- Providing satisfied bandwidth for various network devices, such as online gaming, multi-media, NAS, Server system
- Super Fast 10Gbps RJ-45
- Existing Cat5e cable suitable (Cat6a needed for 10G), painless upgrading
- Compact size for Home or SMB Network Connectivity



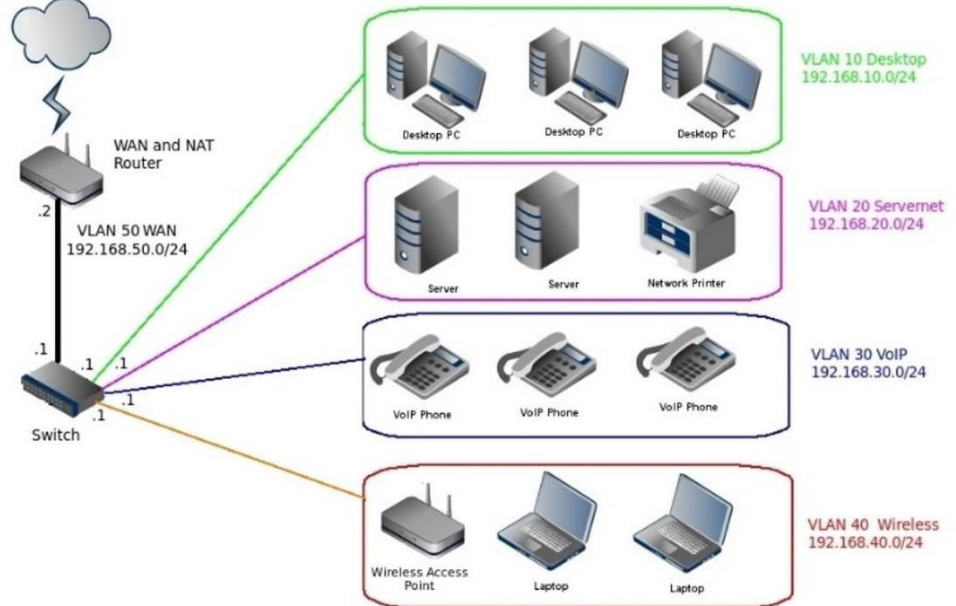
Built for High-Speed connectivity

1G/2.5G/5G/10G RJ-45 Multi Gigabit perfect for various applications

With the 10G Multi-Giga switch, you can connect to a variety of 10GbE-enabled devices, such as NAS | NVR | PC | Server, the RJ45 ports are auto adaptive and can also work at 100/1000M/2.5G/5G , for enjoying faster experience and handle bandwidth-hungry applications.

VLAN for enhanced network security

The VLAN 802.1Q VLAN tagging settings can be used to separate traffic within a business such as isolating resources between network administrators and general users or between employees and public guest users. With the help of VLAN interface, switches can communicate with other network layer devices.

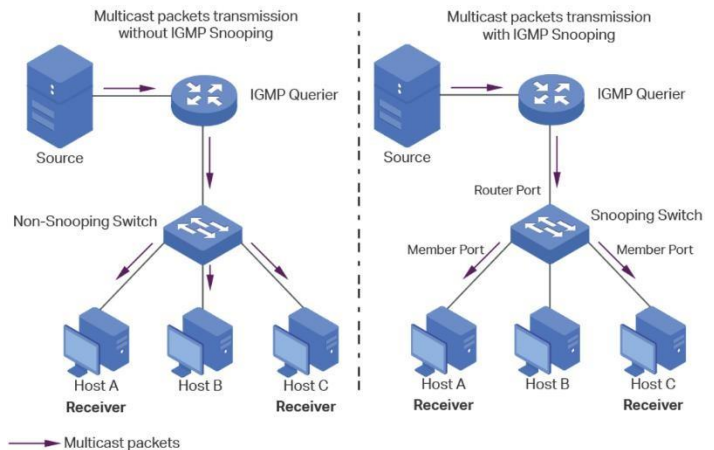


QoS for enhanced traffic control

QoS (Quality of service) is the ability to provide different priority to different applications, users, or video/voice/data flows, or to guarantee a stable level of performance to each data flow. This can be with Port-based Priority or Priority to queue.

IGMP Snooping Multicast

Multicast protocols is compliant with IGMP v1/v2/v3 and supports abundant multicast features such as IGMP v2/v3 snooping and fast leave. By analyzing the IGMP messages received, L2 devices establish a mapping between ports and MAC multicast addresses and forward the multicast data accordingly.



High Video Streaming

Moreover, higher bandwidth improves the playback quality of 4K/8K videos, prevents lag for Gaming, smooths speed when download or upload large data, increases data transfer speed when doing backup to a NAS drive.



Specification

Model	
<p>Hardware</p> <ul style="list-style-type: none">• Device Interface: 8 x 100/1000M/2.5G/5G/10G RJ45 8-port totally Auto MDI/MDIX• Standard IEEE802.3u 100Base-TX IEEE802.3ab Gigabit 1000Base-T IEEE802.3bz 2.5GBase-T IEEE 802.3an 10G Ethernet IEEE802.3x Flow Control and Back Pressure IEEE 802.3ad port trunk with LACP IEEE 802.1D Spanning Tree Protocol IEEE 802.1w Rapid Spanning Tree Protocol IEEE 802.1p Class of Service IEEE 802.1Q VLAN tagging IEEE 802.3az (Efficient and Energy saving Ethernet)• Industry standard compliant EMS: EN61000-4-2 (ESD), IEN61000-4-5 (Surge)• Lightning Surge / ESD Protection: Support Surge Protection: Common Mode 6KV, Differential Mode 2KV(Class C), Electrostatic ESD 8KV Air, 6KV Contact(Class C)• LED Indicators: PWR (power supply), Port LED Green (2.5/5/10G Link), Port LED Yellow (100/1000M Link)• Mechanical Solid Metal Housing, Desktop <p>Switch Architecture Performance</p> <ul style="list-style-type: none">• Switching architecture: Store and Forward Switch Capacity: Back-plan up to 160Gbps Packet Forwarding Rate; 119.04Mpps Packet Cache: 12Mbit MAC Address: 16K VLAN: VLAN range 1-4094, with a maximum active VLAN of 4K Transfer mode: Store and Forward MTBF:100000 hour <p>Web Management Software Function L2</p> <ul style="list-style-type: none">• Port Setting: Port Switch Configuration, Port Description Configuration, Port Duplex Configuration, Port Flow Control Configuration, Jumbo Frame up to 16356bytes, EEE• Link Aggregation: Support load sharing strategy based on MAC and IP- MAC addresses, Static and dynamic aggregation groups, Support LACP, Max. 8 members per group• Storm Control: Broadcast, Unknown Multicast, Unknown Unicast	<ul style="list-style-type: none">• Port Mirroring: One to one monitor, Many to one monitor, Ingress/Egress/Both, Up to 4 session groups• Port Security: MAC Address Constraints, Protect/Restrict/Shutdown• Port Isolation: Supported• Port Rate-limit: Bandwidth Control• VLAN: Access/Trunk/Hybrid, VLAN Tunnel (Q-in-Q Tunnel), VLAN range 1-4094, maximum active VLAN is 4K• MAC Address: Static MAC address, MAC Address Filtering• Spanning Tree Protocol: STP/RSTP, BPDU Filter, BPDU Guard, Edge Port• Multicast: IGMP Snooping, IGMP V1/V2/V3, Router Port, Static Multicast• QoS: Traffic classification based, Strict priority and WRR, Port Priority, 802.1P Priority, IP DSCP Priority, Supports up to 8 queues per port, Priority Remark• Services: Supported• Security: Supported• DHCP Snooping: Supported• Diagnostics: Supported• Ping: Supported• Electrical Port Test: Supported <p>Management</p> <ul style="list-style-type: none">• Manager Access: HTTP, SNMP• Manager IP: Static Address, DHCP Client, Manager VLAN, DNS• SNMP: V1/V2C, Community Name, Trap host• SNMP MIB: RFC 1213 MIB-II, RFC 1643 Ethernet MIB, RFC 2863 Interface MIB• User• Firmware: Firmware Upgradable• Configuration: Upload and Download• Save, Restart• Factory Defaults

* Specification will be changed without prior notice

* All trademarks, logos and brand names are the property of their respective owners.

Specification

Model	
<ul style="list-style-type: none">• Transmission Distance 10Base-T: Cat3,4,5 UTP(≤100 meter) 100Base-TX: Cat5 or later UTP(100 meter) 1000Base-TX: Cat5e or later UTP(100 meter) 2500Base-TX: Cat5e or later UTP(100 meter) 10GBase TX: Cat6a, Cat7 or above UTP/STP (100m) <p>Power</p> <ul style="list-style-type: none">• Power Input: AC 100~240V• Power Usages Max: 38.6W <p>Environment</p> <ul style="list-style-type: none">• Operating Temperature: 0°C to +40°C• Storage Temperature: -40°C to +70°C• Working Humidity: 10%~90%, non-condensing• Storage Humidity: 5%~95%, non-condensing <p>Standard package of switch</p> <ul style="list-style-type: none">• Product size: 32.0 x 20.7 x 4.5 cm(L*W*H)• Package size: 37.0 x 29.0 x 8.5 cm(L*W*H)• Package Weight: N.W: 1.82Kgs; G.W: 2.36Kgs• Package content: 1 x Switch, 1 x Power cord, 1 x QIG. <p>Standard carton package</p> <ul style="list-style-type: none">• Quantity: 5pcs / 1 carton• Dimensions 44.5 x 31.0 x 39.0cm (L*W*H)• Weight 12.8Kgs (G.W)	

* Specification will be changed without prior notice

* All trademarks, logos and brand names are the property of their respective owners.