

IPVDS-WallController User Manual

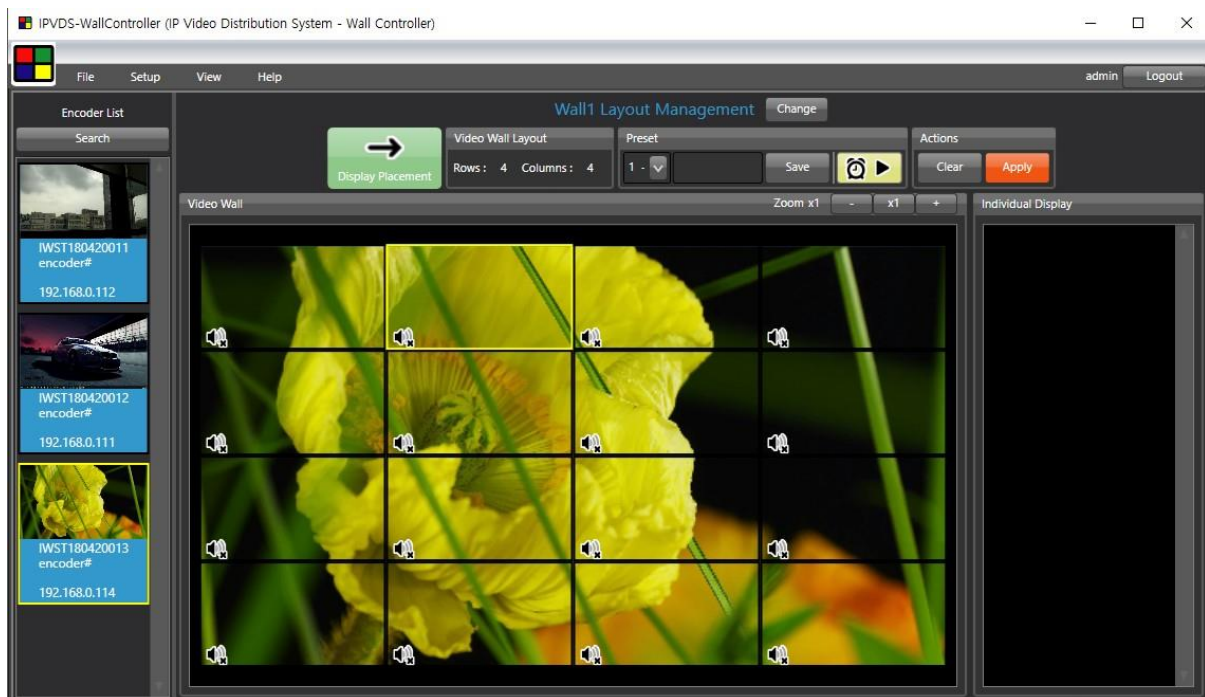


Table of contents

1. Program Installation

1.1 PC Program Installation

1.2 PC Program

2. Start Video Wall

2.1 Log-in

2.2 Menu Contents

2.2.1 Application Icon Menu

2.2.2 Ribbon Menu

2.3 Layout Management

2.3.1 Layout Editing

Zoom In/Out

Audio Setup

2.3.2 Preset Save

2.4 Display Placement

2.4.1 Display Layout Edit

Display Rotation

OSD

3. Context Menu

3.1 Layout Management Context Menu

3.1.1 Encoder List Context Menu

Device Setup

Firmware Update

Set Source Name

Encoder Crop Setup

3.1.2 Video Wall Context Menu

Remove Encoder

Split Merged Cell

Add Black Mask

Bring/Send Layer

Set Location Name

Delete Location Name

3.2 Display Placement Context Menu

3.2.1 Decoder List Context Menu

Device Setup

Firmware Update

3.2.2 Video Wall Context Menu

Remove Decoder

Decoder Layout Setup(Display Setup)

Bezel/Resolution/Stretch Type

4. Additional Feature

4.1 Scheduling Feature

4.2 Multiple Video Wall

4.3 Plug-in Feature

5. License

1. Application Installation

1.1 PC Application Installation

1) Installation

- (1) Run setup.exe file in Windows Operating System.
- (2) Follow on-screen instruction.
- (3) Delete previous version of IPVDS PC Application on the control panel of Windows OS in case of re-installation or PC Application update from previous version.

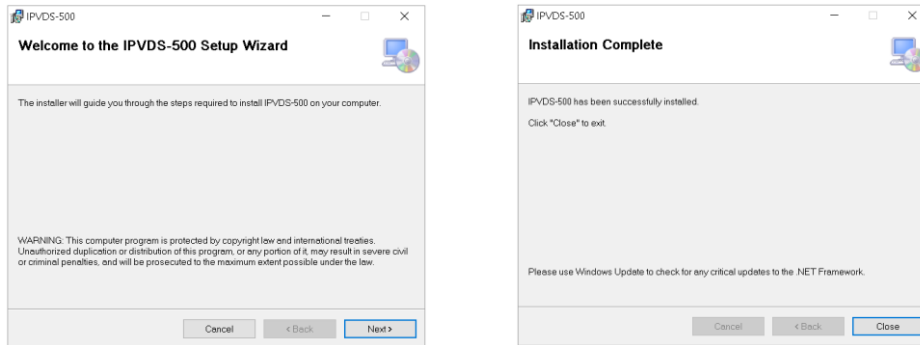


Figure. 1 Application Installation

1.2 PC Application

1) Control PC Application

- PC application for controlling Video wall and individual displays.
- Provides drag and drop operation for host allocation.
- Provides allocate, merge, split, overlay function on layout management.
- Provides preview screen before applying it to actual displays.
- Provides total of 99 pre-sets for user defined layout (save/load).
- Provides preset scheduling function in two different mode:
Sequential mode (dwell time based) / Weekly mode (hourly based/week).
- Bezel compensation in 0.1mm unit.
- Application: Control Room / Traffic Control System / Security and Education / Digital Signage / Pro AV Field.

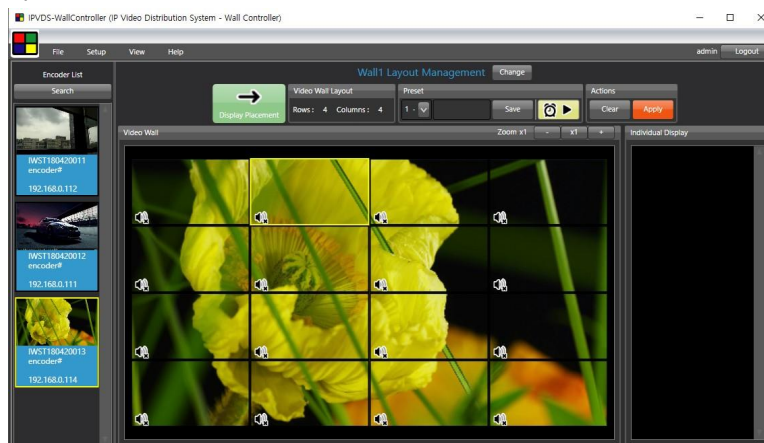


Figure 2. Software Main Screen

2. Start Video Wall

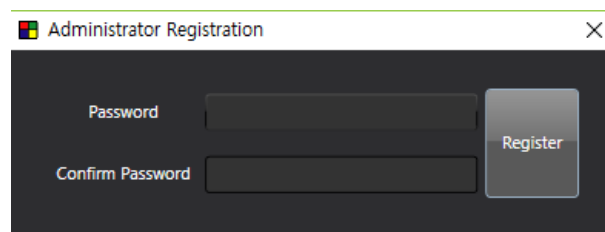
IPVDS allows convenient use of its features with IPVDS Video Wall control PC Application. With IPVDS WallController, user can merge, split, overlay and clear video sources on Video Wall by dragging & dropping for host allocation but also check and confirm preview screen from layout management before applying to actual displays.

2.1 Log-in

(1) Run PC Application.



(2) Set & confirm password for administrator (**ID: admin**) when first-time log-in.



(3) Log-in with admin ID and its password.

(4) To log-in with different ID, restart the PC App. or click '**Log-out**' button.

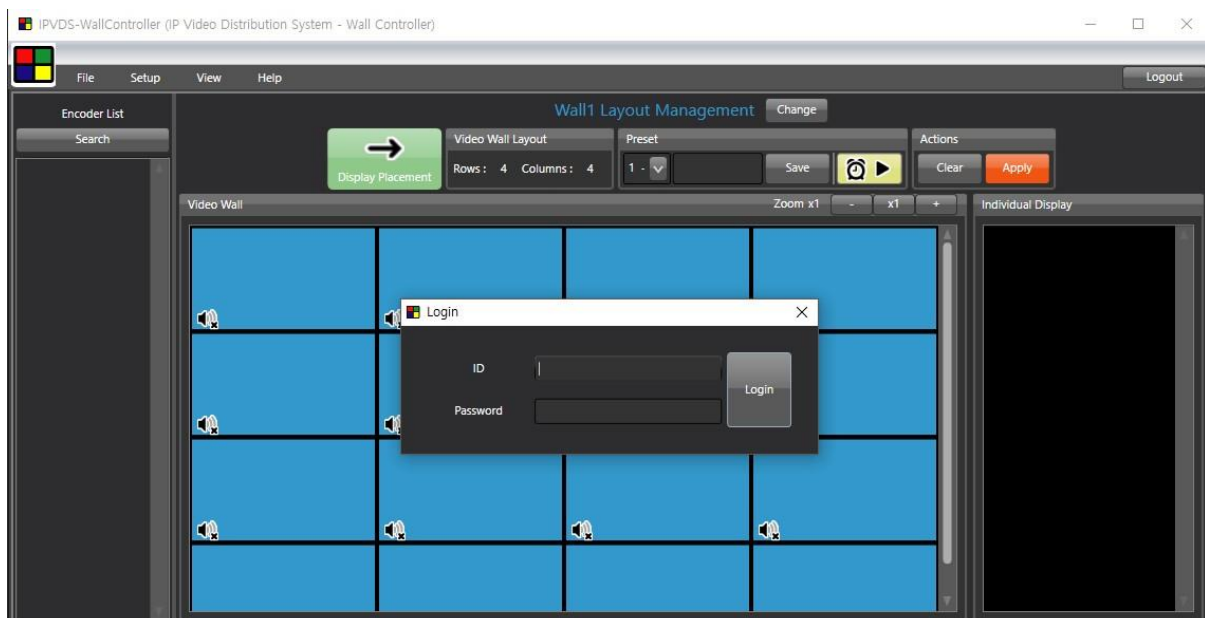


Figure. 3 Log-in Screen

Note: After launching PC App, it will automatically search for the connected devices and allow user to log-in when it is done with device search.

2.2 Menu Contents

2.2.1 Application Menu

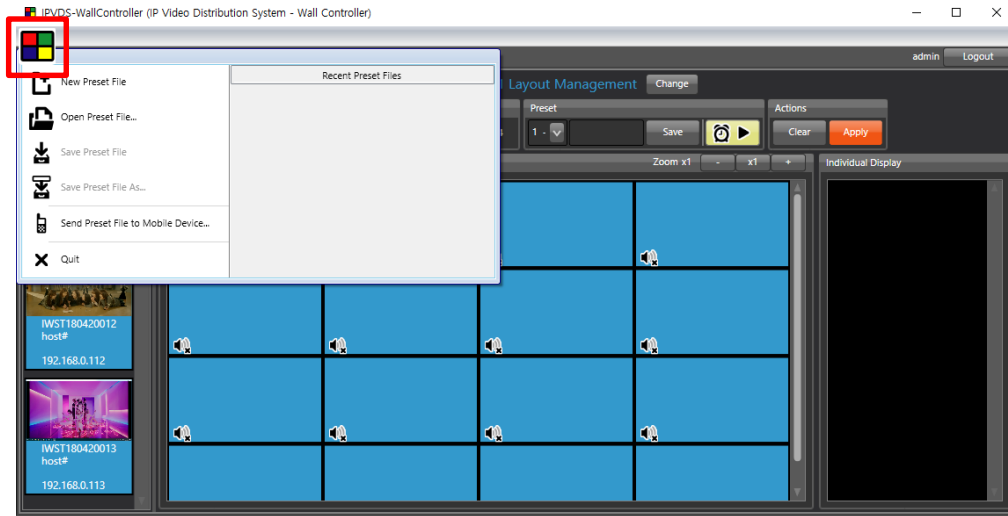


Figure. 4 Application Icon Menu

- (1) **New Preset File:** Create new preset.
- (2) **Open Preset File:** Open saved preset.
- (3) **Save Preset File:** Save current preset as a file.
- (4) **Save Preset File as:** Save current preset as a different file name.
- (5) **Send Preset File to Mobile Device:** Send saved preset to Mobile devices.
- (6) **Quit:** Close PC Application.

2.2.2 Ribbon Menu

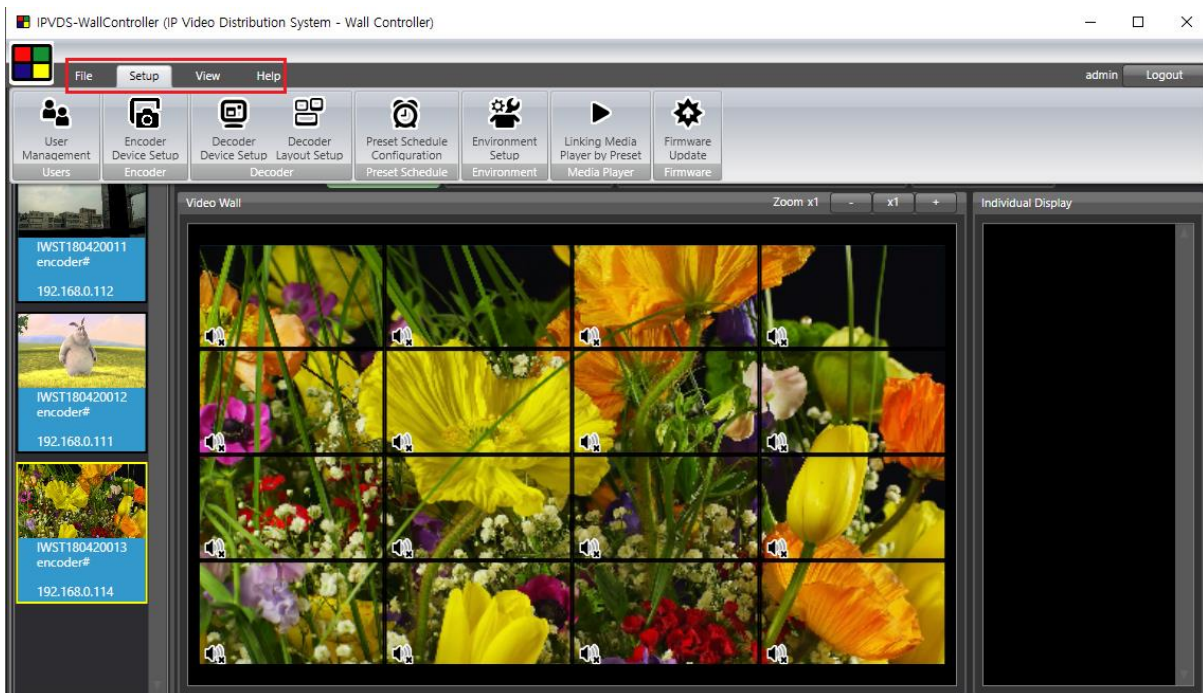


Figure. 5 Ribbon Menu

- (1) **User Management**

Password of Administrator ID (**admin**) can be changed.

Accessing as administrator (**admin**) allows specific functions such as managing User/Guest account and changing password.

- User type

User: All authority without user/guest management (add/change/remove).

Guest: Select preset, and 'Apply' function only.

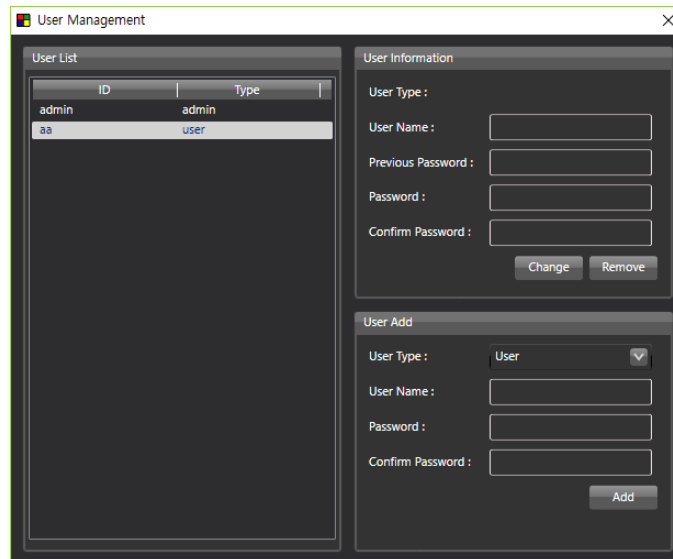


Figure. 6 User Management

(2) **Encoder Device Setup:** Refer to encoder setup on layout management (P 22).

(3) **Decoder Device Setup:** Refer to decoder setup on display placement (P 33).

(4) **Decoder Layout Setup:** Refer to decoder layout setup on display placement (P 37).

(5) **Preset Schedule Configuration:** Refer to scheduling function (P 40).

(6) **Environment Setup**

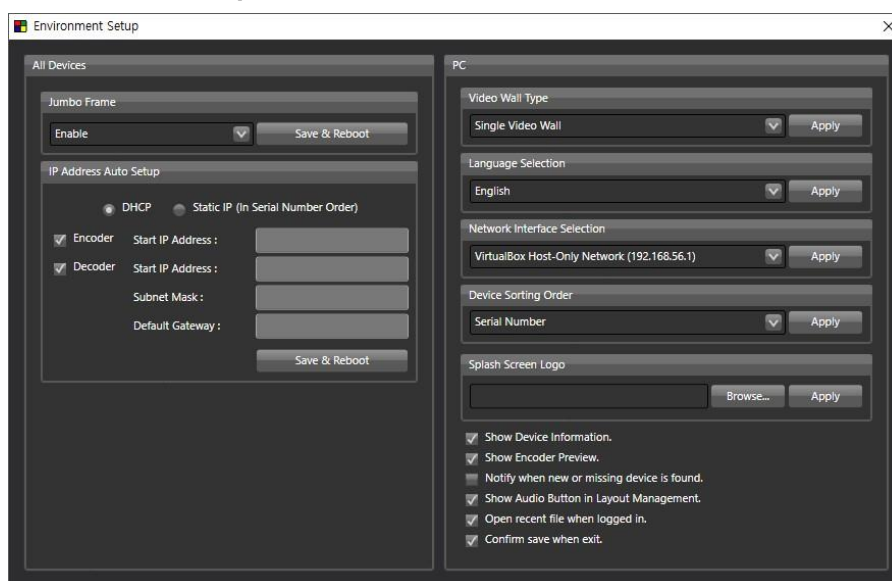


Figure. 7 Environment Setup

➤ **Jumbo Frame**

This option decides MTU size.

Video quality will be affected when disabled.

"Enabled" **8,000** byte

"Disabled" **1,500** byte

➤ **IP Address Auto Setup**

This feature is designed for the convenient setup of IP address assignment for multiple encoders / decoders at once. When operating as a static IP setting, IP addresses are automatically incremented by 1(one) from the starting IP address and IP addresses are automatically incremented by 1(one) in DHCP setting.

➤ **Video Wall Type**

Select 'Single Video Wall' (Basic) or 'Multiple Video Wall' (Pro).

In order to use Pro version, license key is required.

To obtain license key, contact tosales@optisic.com or techsupp@opticis.com

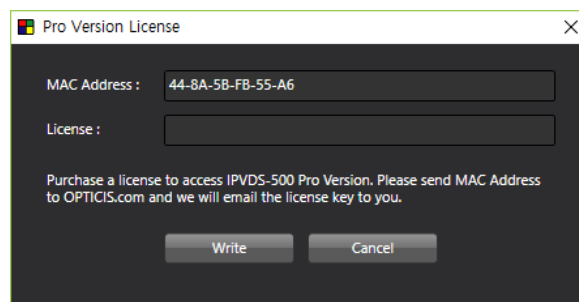


Figure. 8 Pro Version License

➤ **Language**

Select 'English' or 'Korean'

➤ **Network Interface Selection**

If more than one network interfaces are connected to Control PC, there is a high possibility to cause a problem when searching or operating device. Appointing correct network interface can solve this problem.

➤ **Device Sorting Order**

Appoint sorting order for searched devices.

When decoders are automatically sorted, it will be automatically placed as sorting order and default setup is 'serial number' sorting.

➤ **Splash Screen Logo**

Change the startup screen logo when PC program launches.

➤ **View Device Information**

Check either the serial number or the IP address of searched encoders/decoders.

➤ **View Encoder Preview**

Select options for the preview which appears in the encoder list.

➤ **Notify when new or missing device is found**

Select to show a scan pop-up window whenever a new or missing device is detected on the network.

➤ **View Audio Button in Layout Management**

Select to display the visible audio icon on the display layout.

➤ **Open recent file when logged in**

Choose to open and apply a last saved preset file automatically when logging in.

➤ **Confirm save when exit**

Choose to save and exit current setting when exiting the program.

(7) Firmware Update

Step 1

Run Firmware Update.

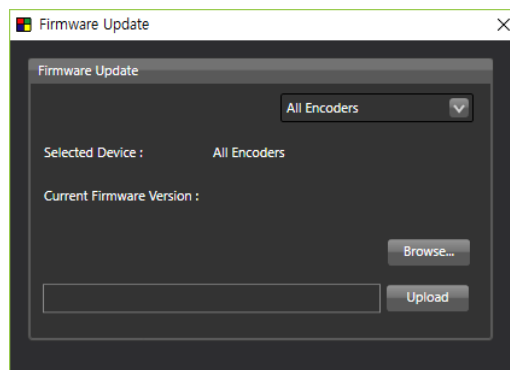


Figure. 9 Firmware Update Window

Step 2

Select 'All Decoders', 'All Encoders' or a specific device need to be updated.

Note: Change IP address and Gateway from control panel, if IP address of PC and device selected by gateway don't match.

Step 3

Click '**Browse**' button, and select specific firmware file to update.

Note: User can check firmware version of selected device from right space.

Step 4

Click '**Upload**' button, and make sure power adapter is plugged firmly.

LED will flash while updating and device will automatically reboot when update is done.

Note: Pop-up message will appear when update is done. (approximately 5 minutes)

Do not disconnect power (power adapter or PoE) while updating

✓ **Note: Firmware update with USB flash drive.**

Step 1: Save firmware file (**IPVDS-xxx-X-xxxxxx.tgz**) in the USB flash drive.

Step 2: Insert USB flash drive to the USB port of IPVDS-700 device.

Step 3: Plug-in +5V power adapter or PoE cable (power adapter gets priority supplying power to IPVDS-700 devices).

Step 4: While booting, device will search firmware file which has saved in USB flash drive, and it will start updating if file exists.

Step 5: While updating, LED will blink, and it will reboot when update is completed. Update will take approximately 5 minutes and make sure power adapter is not disconnected during update.

(8) View: Adjust size of device list, layout, and log record on PC application.

(9) Help: Check version of IPVDS-WallController PC application

2.3 Layout Management

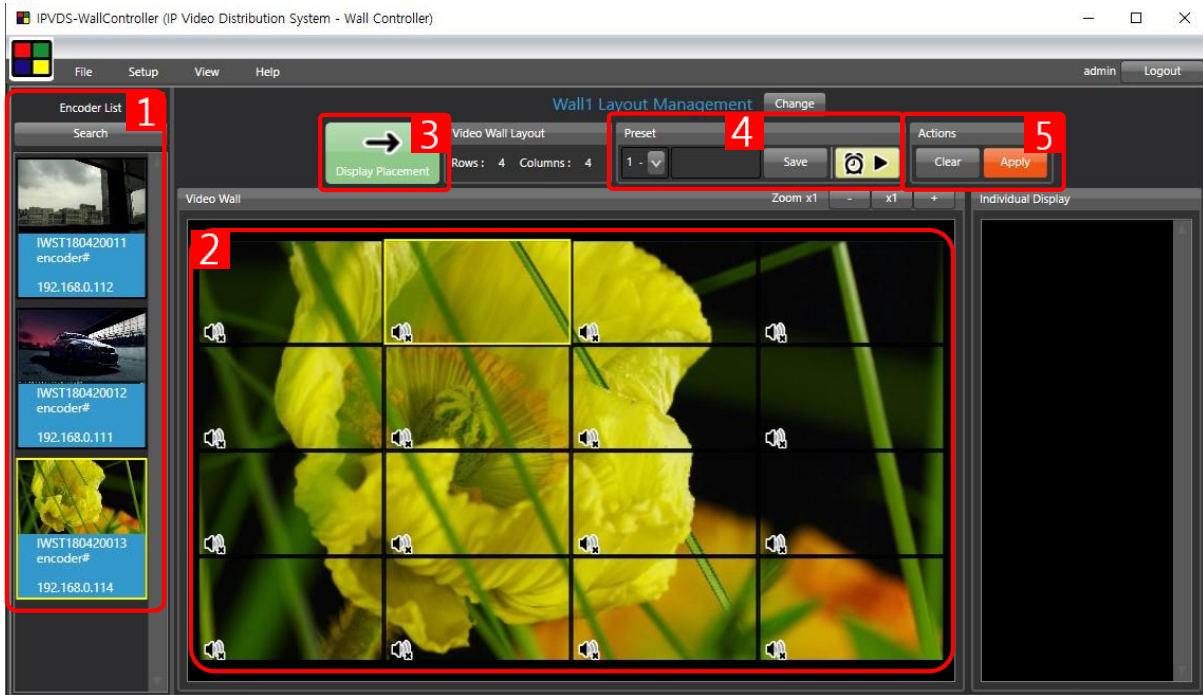


Figure. 10 Layout Management

1 Encoder List

- **Search:** Search IPVDS encoder devices on the network.
- Encoder device list that is connected to the IP network.
- Check preview screen of Video sources connected.
- Allocate and assign preview screen on Video Wall layout with drag and drop.


2 Video Wall

- Assign encoder devices, edit layout for video wall in row and column.
- Audio ON/OFF.

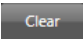

3 Display Placement

- Change display layout, move to setup page for decoder assign and change.

4 Preset

- Save current video wall layout as preset file.
- Load preset layout that has saved previously.
- Start preset scheduling button ().

5 Actions

- **'Clear'** button  will empty all encoders that has assigned in video wall region.
- **'Apply'** button  will apply current video wall setup, which can be checked on preview screen, to the actual video wall and individual displays.

2.3.1 Layout Editing

Step 1

After searching devices, drag and drop video source from the encoder list on the left side to video wall layout to configure video wall layout.

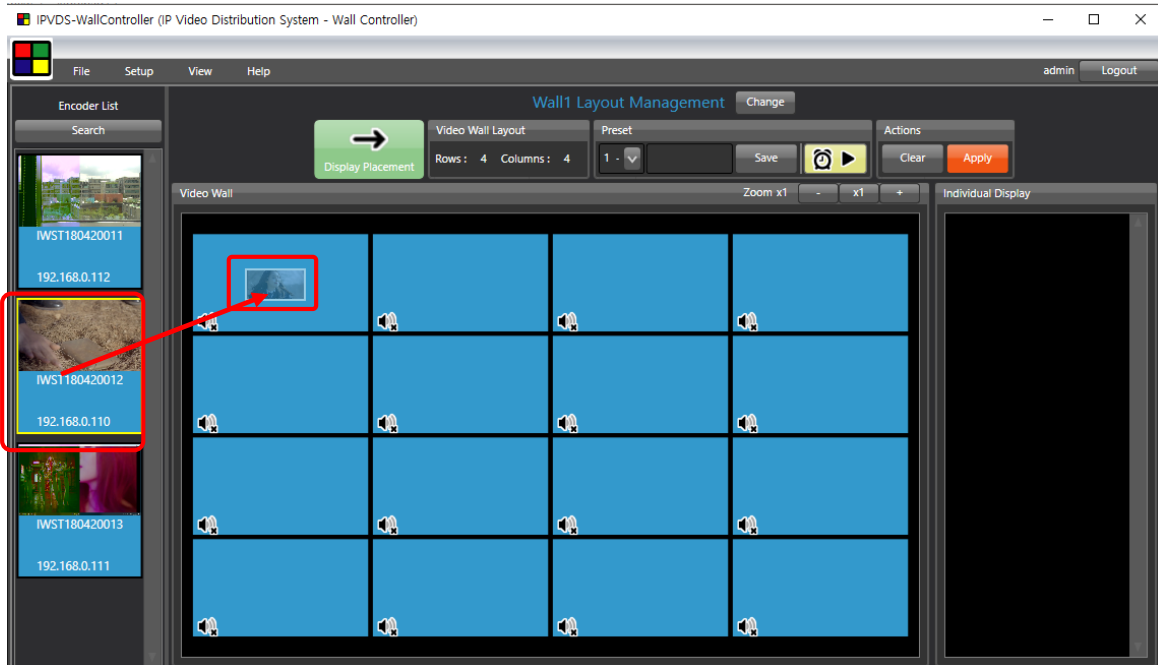


Figure. 11 Encoder Placement

Step 2

Drag-pointer will appear when clicking placed video source on the layout. User can stretch or reduce size of video source as direction of arrow.

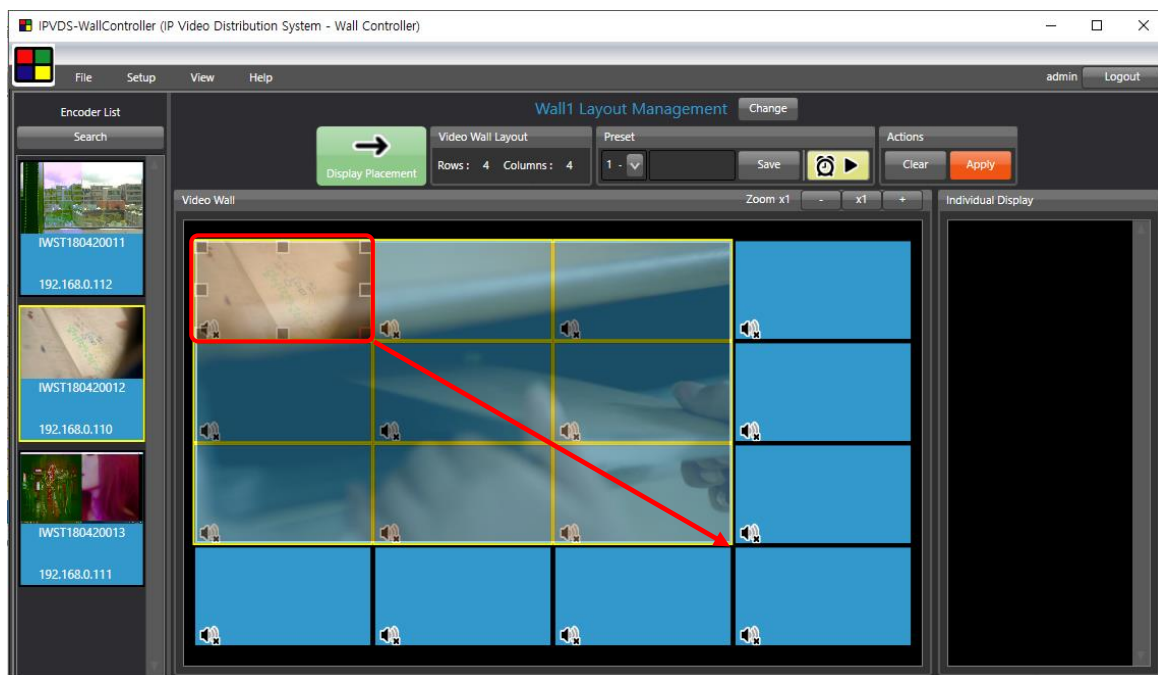


Figure. 12 Stretch and Reduce

Step 3

With using Audio ON/OFF icon, audio of display can be turned ON or OFF.

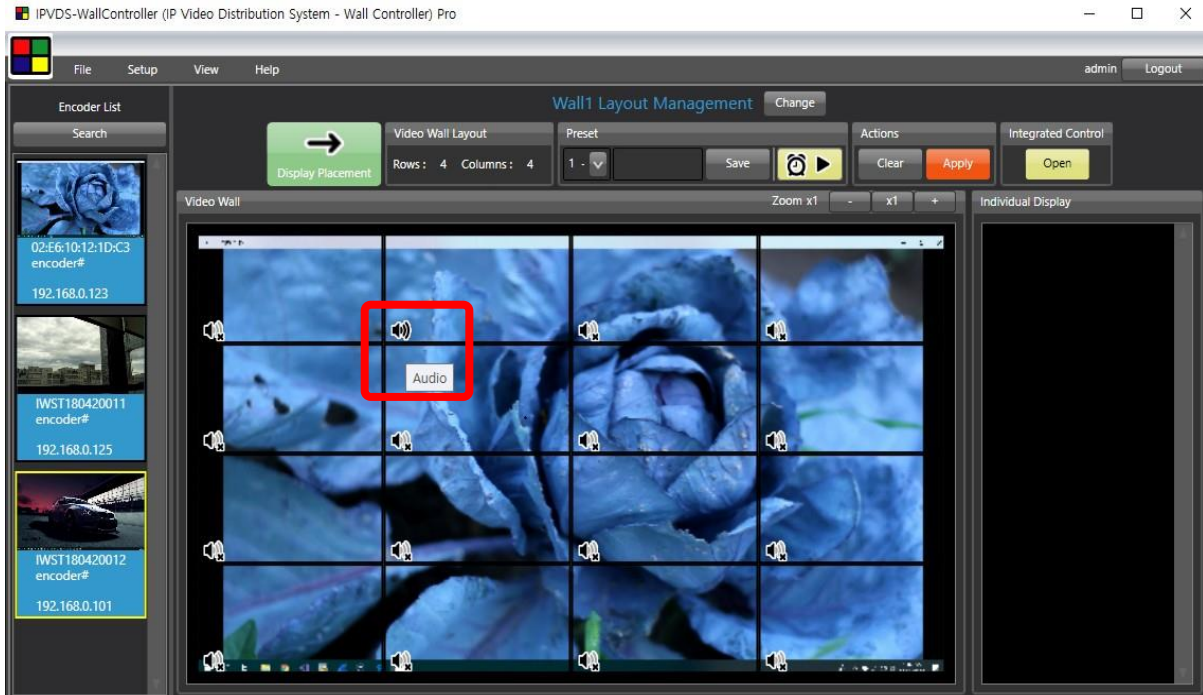


Figure. 13 Audio On/Off

Step 4

Repeat Step 1~3, and click '**Apply**' button for actual application to decoders and displays.

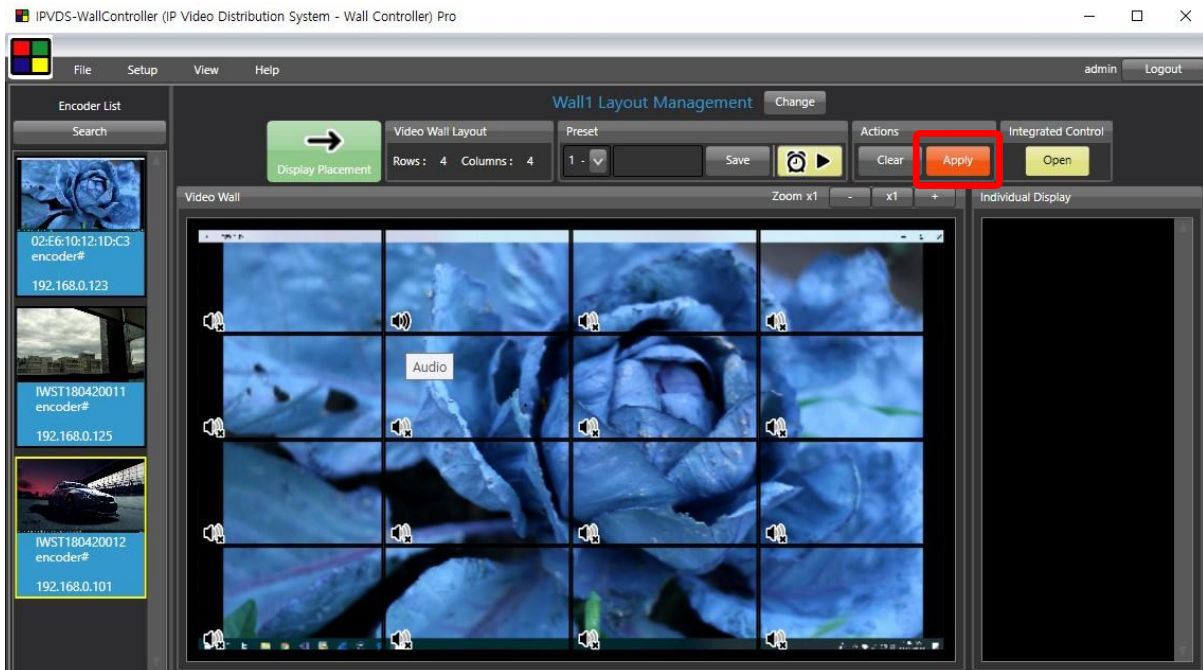


Figure. 14 Apply Setup.

Step 5

With zoom feature, layout size can be adjusted (x0.2 ~ x5) to check overall layout for decoders (no placement or change but only audio setup at less than x0.5 zoom).

2.3.2 Preset Save

Step 1

Type the name of current preset, and click 'Save' button to save current display layout.

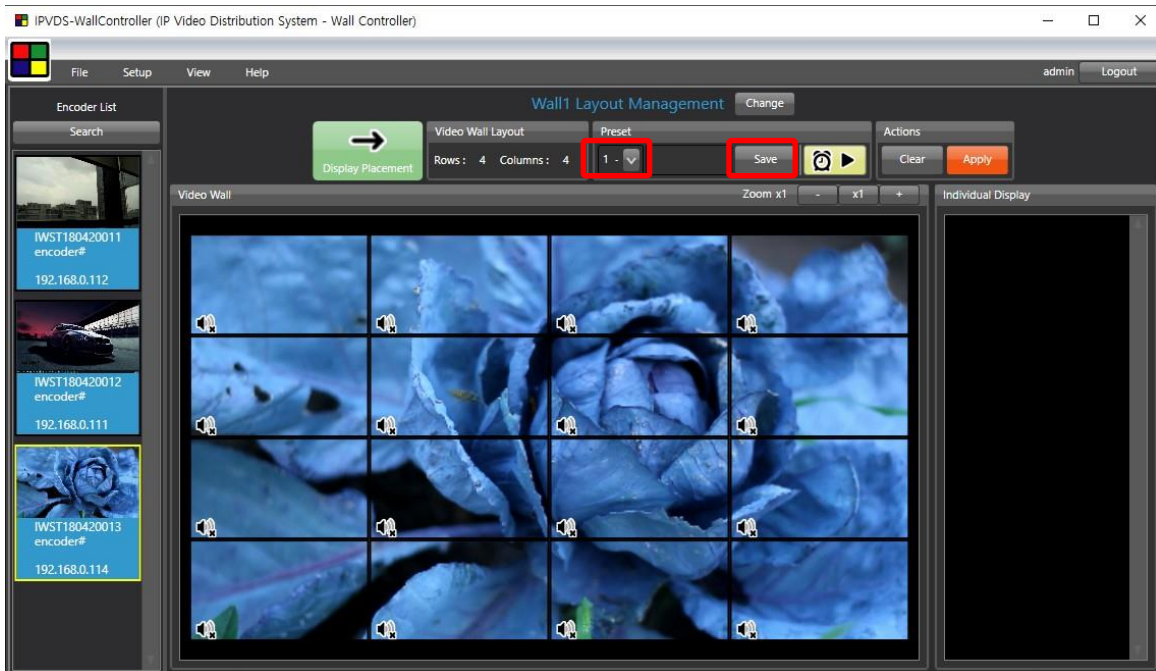


Figure. 15 Preset Save

Step 2

If select non-saved preset number, video wall placement will be cleared, and it will become blank (editable) status. Edit layout by placing encoders and save as Step 1. Presets can be saved up to 99 different presets for one video wall system.

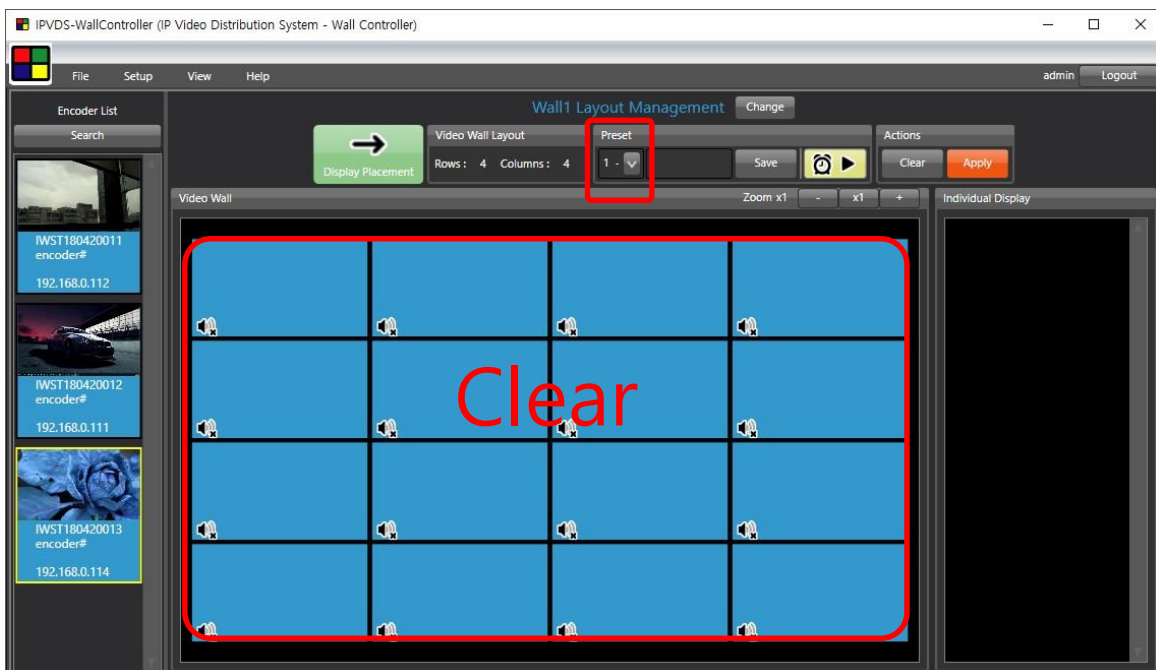


Figure. 16 Change Preset

Step 3

By selecting particular preset number, user can load saved preset (video wall layout).
Click '**Apply**' button to run current preset to decoder devices and displays.

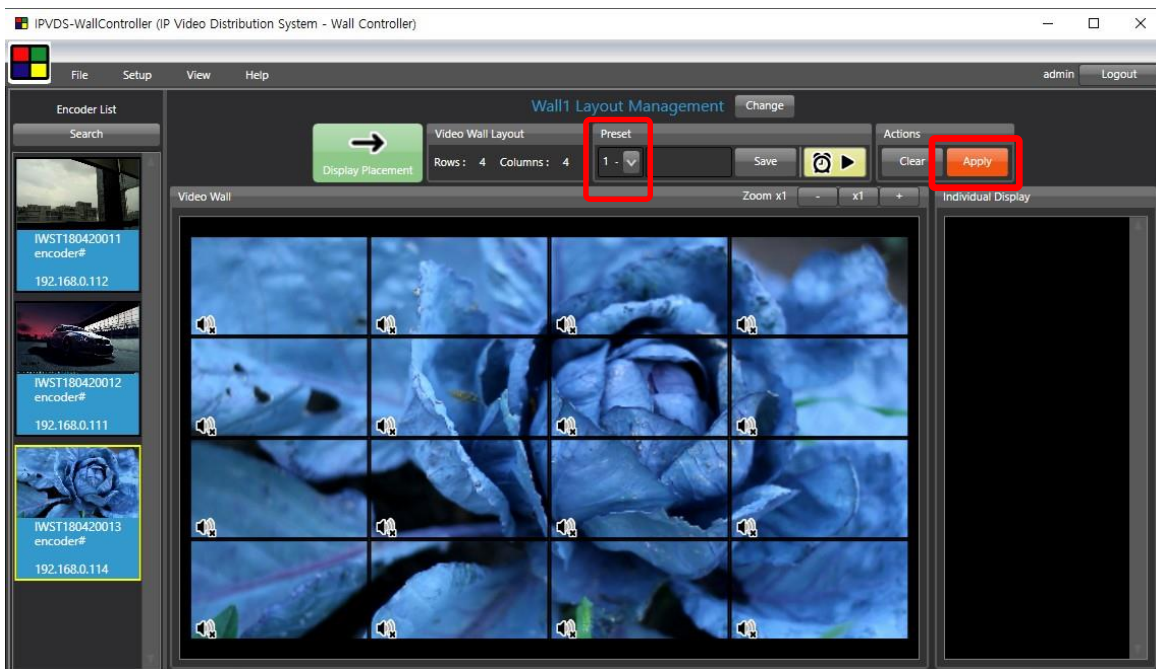


Figure. 17 Apply Setup

Step 4

When user re-launches PC application, last saved preset will be loaded if user save preset setup with '**Save Presets File**' from icon menu.

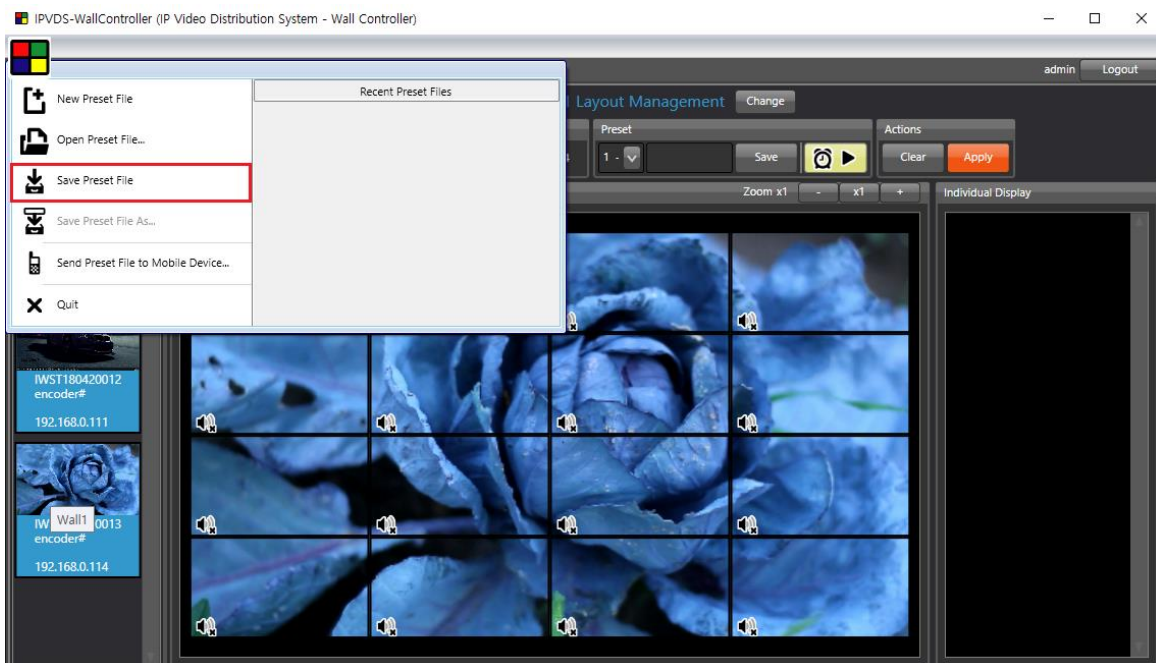


Figure. 18 Save Preset File

2.4 Display Placement

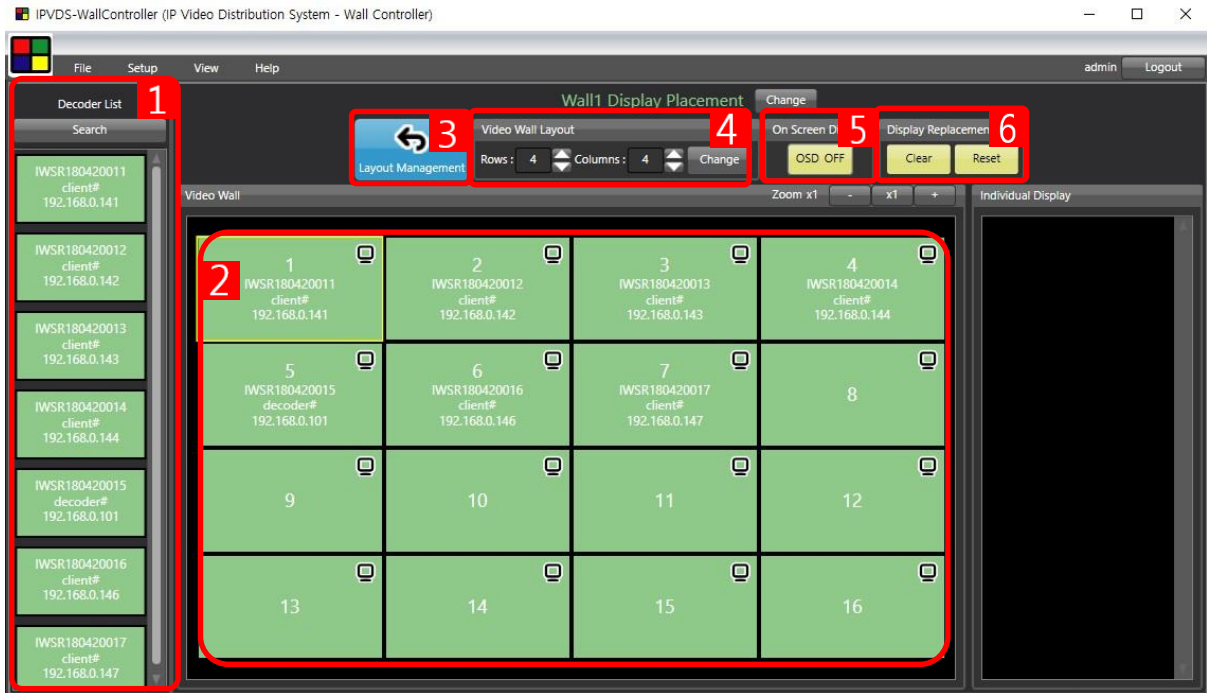


Figure. 19 Display Placement Screen

1 Decoder list

- List of Decoder devices list which has connected to IP Network.
- Assign Video wall layout with drag and drop.

2 Video Wall

- Adjusting physical placement as placing decoder device to particular video wall layout.
- Display rotation: Rotate separately 180°, entirely 270°
- Individual display: Display except for row x column video wall setup.

3 Layout Management

- Move to layout management page.

4 Video Wall Layout

- Edit row x column layout for video wall.

5 On Screen Display (OSD)

- Show number, which has assigned from decoder, to corresponding display.
- Display sequence check and replacement as confirming OSD information that can be indicated on display when OSD is ON.

6 Display Replacement

- **Clear** (): Empty all the display that has assigned.
- **Reset** (): Display replacement with 'serial number' or 'IP address'.

2.4.1 Edit Display Layout

Step 1

Change display layout to desired row and column (Default: 4 x 4)

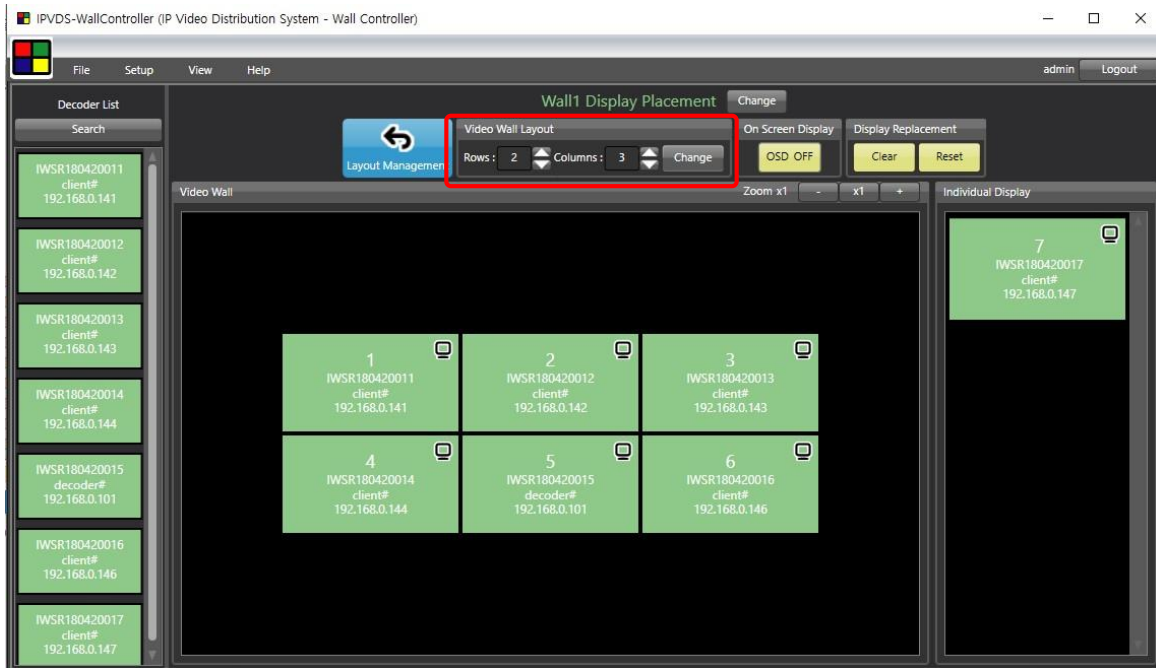


Figure. 20 Change Video Wall Layout

Step 2

Change decoder placement to desired position with drag and drop.

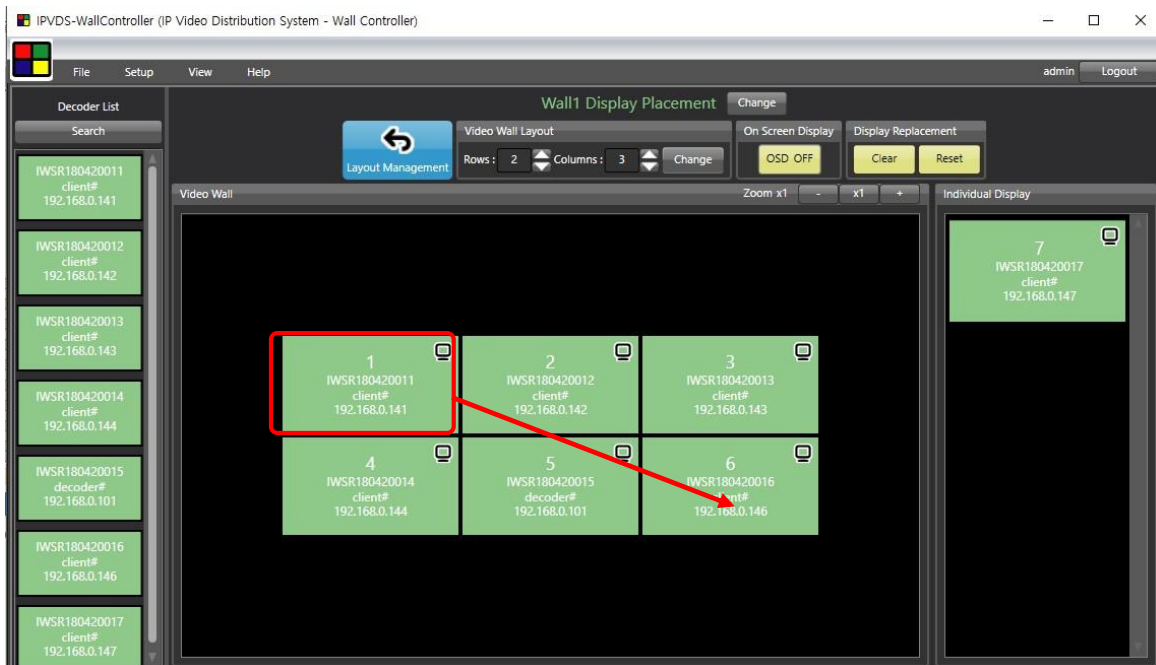


Figure. 21 Change Decoder Placement

Assigned decoder can be removed separately or entirely with mouse right click, and listed

decoder under 'Search' button can be place with drag and drop operation.

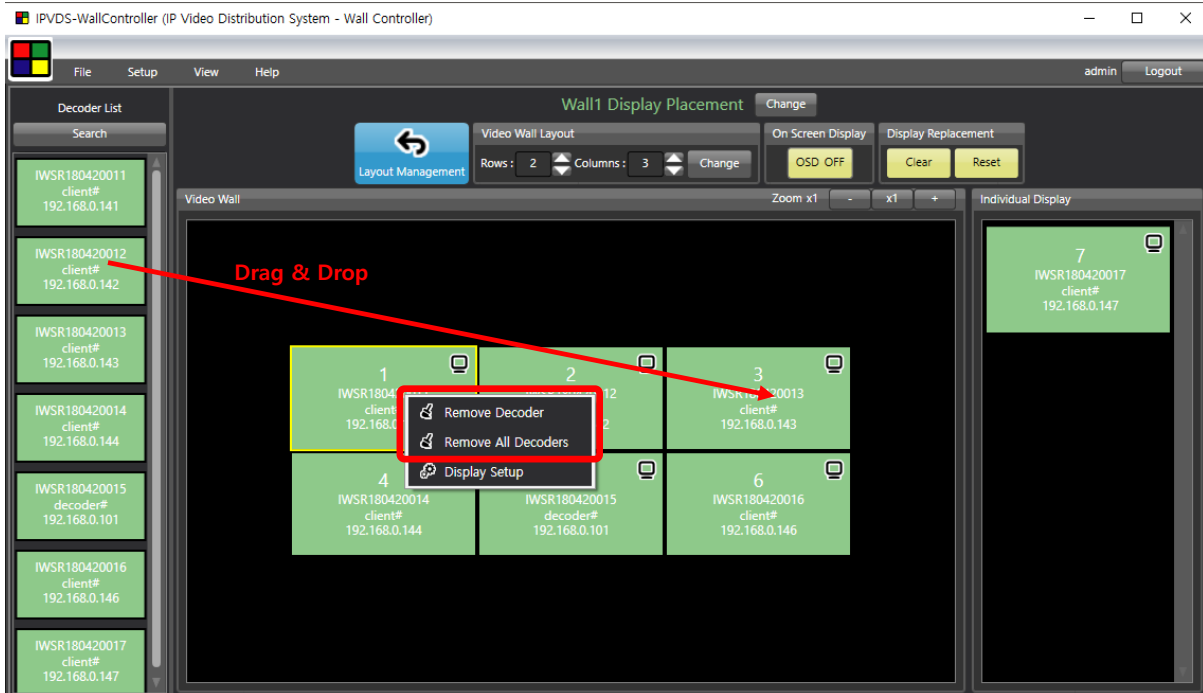


Figure. 22 Remove Decoder

'Clear' button will empty all decoder which has assigned to layout, and 'Reset' button will automatically place decoders with 'serial number' or 'IP address' as environment setup.

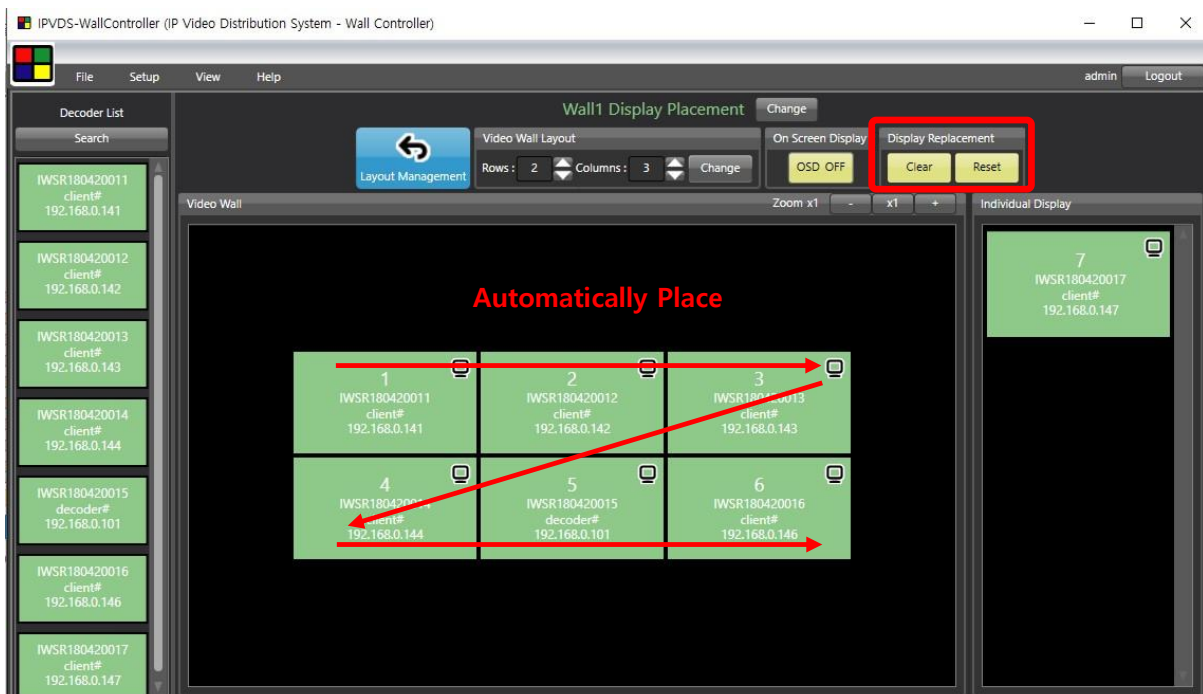


Figure. 23 Display Replacement

Step 3

With clicking '**Display Rotation**' button on top right hand corner, display rotates clockwise. 180° rotation with one click, and 270° rotation with one more click.

- 180°: For separate display. Display will rotate 180°
 - 270°: For entire display. Entire display on the layout will rotate 270°
- Monitor need to be rotated 90° for normal screen output.

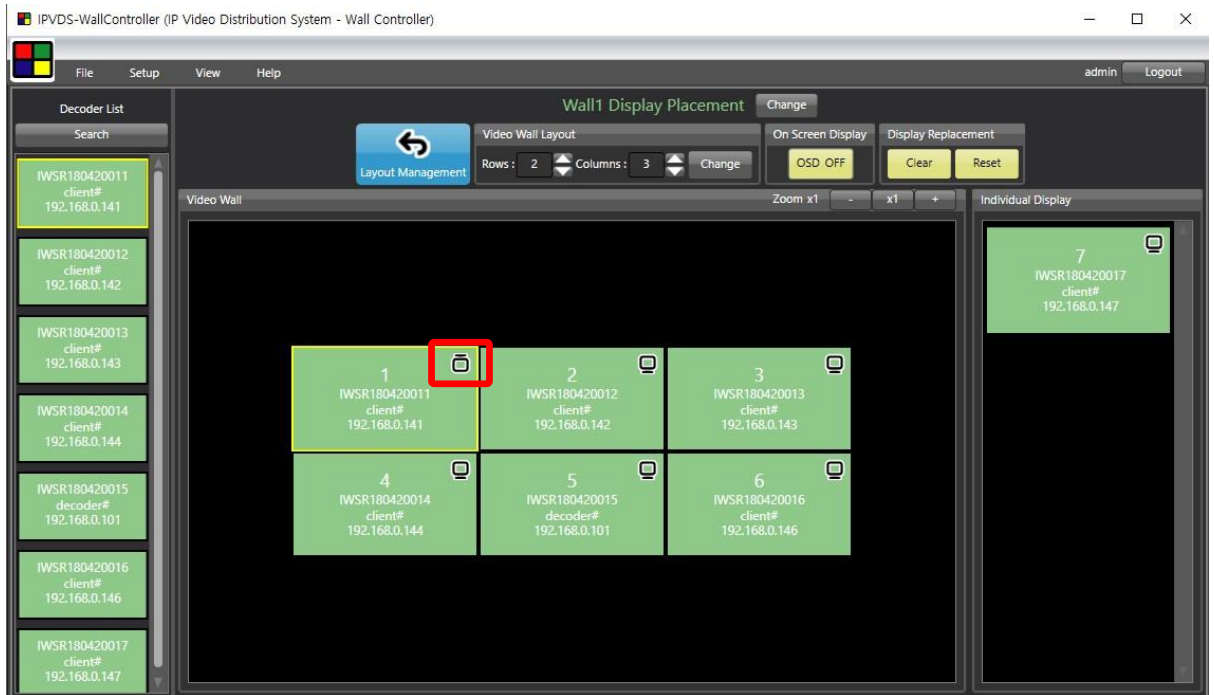


Figure. 24 Separate Display – 180° Clockwise Rotation

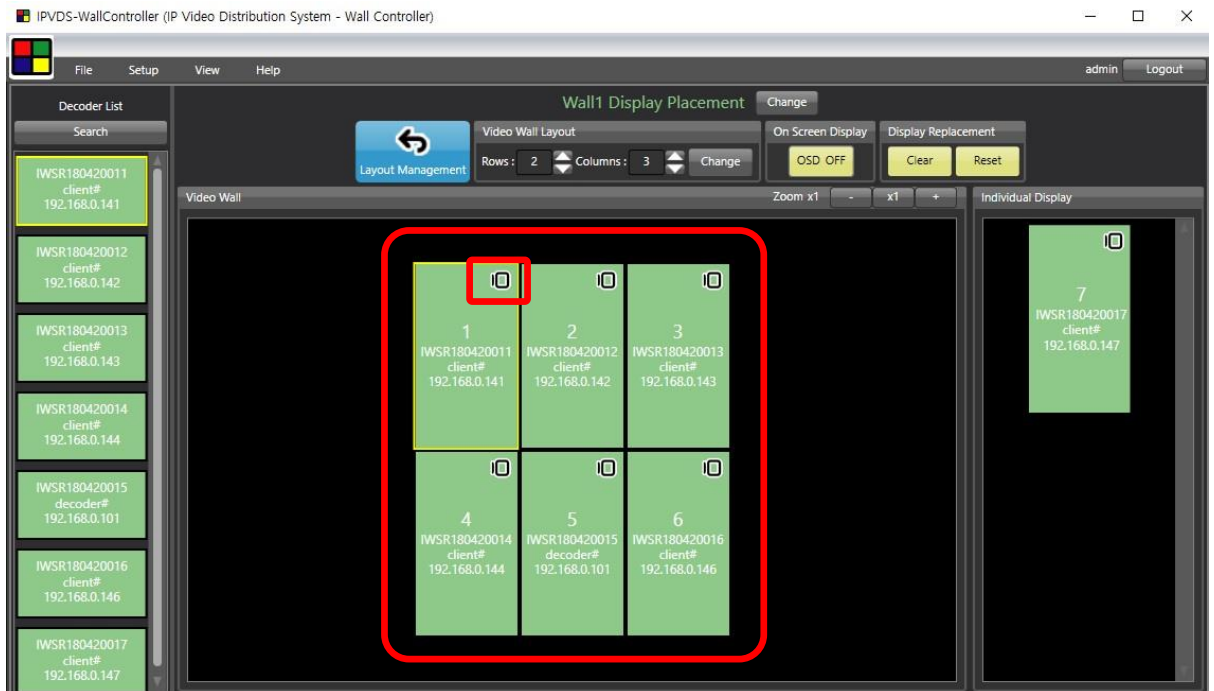


Figure. 25 Entire Display – 270° Clockwise Rotation

Step 4

Assigned number of display will be indicated on the actual display when clicking 'OSD ON' button. User can replace their sequence automatically or manually.

Using OSD is recommended to use when video source is not connected to the decoder.

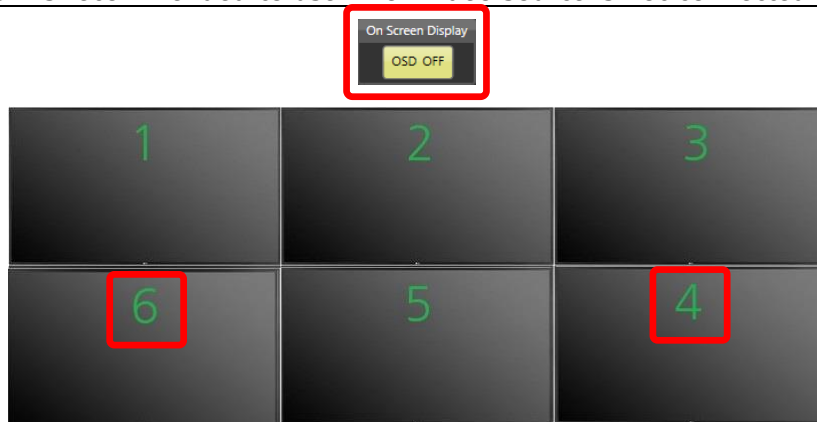


Figure. 26 Display Output

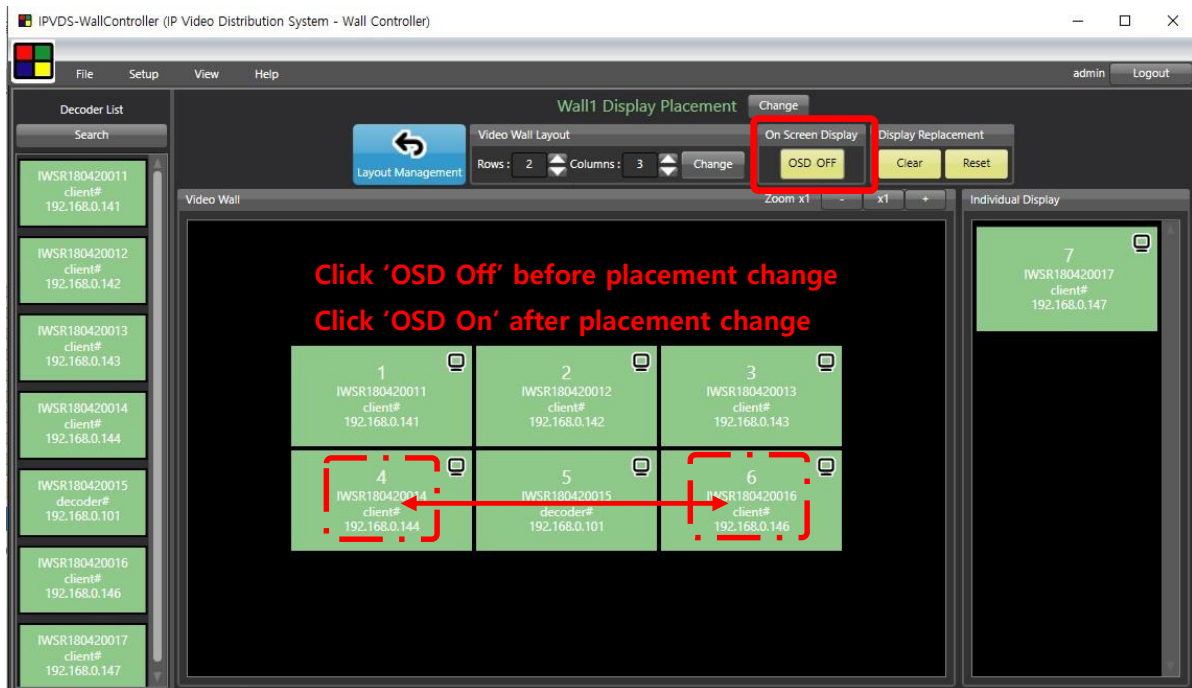


Figure. 27 PC App. Placement Change



Display Output after Placement Change

Figure. 28 OSD Placement Check and Change

Step 5

Click 'Layout Management' button to move to the Layout Management page.

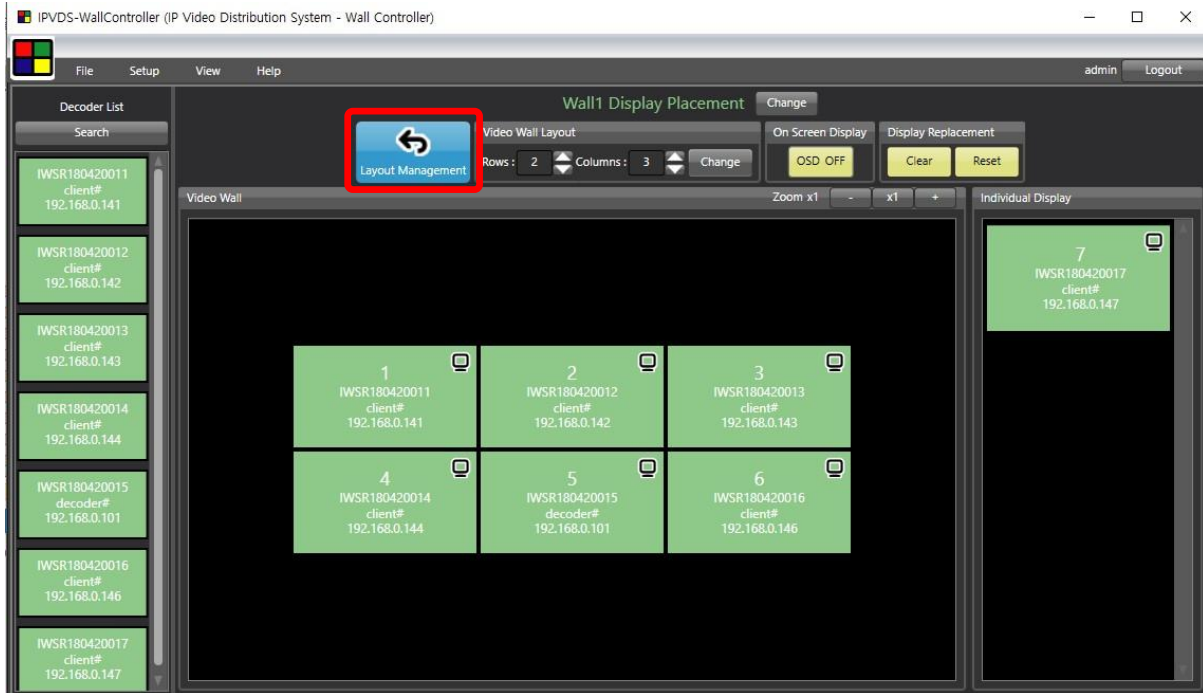


Figure. 29 Layout Locked

Step 6

Decoder placement and connection is ready.

Now connect video sources referring to the **6.3 Layout Management**.

3. Context Menu

3.1 Layout Management Context Menu

3.1.1 Encoder List Context Menu

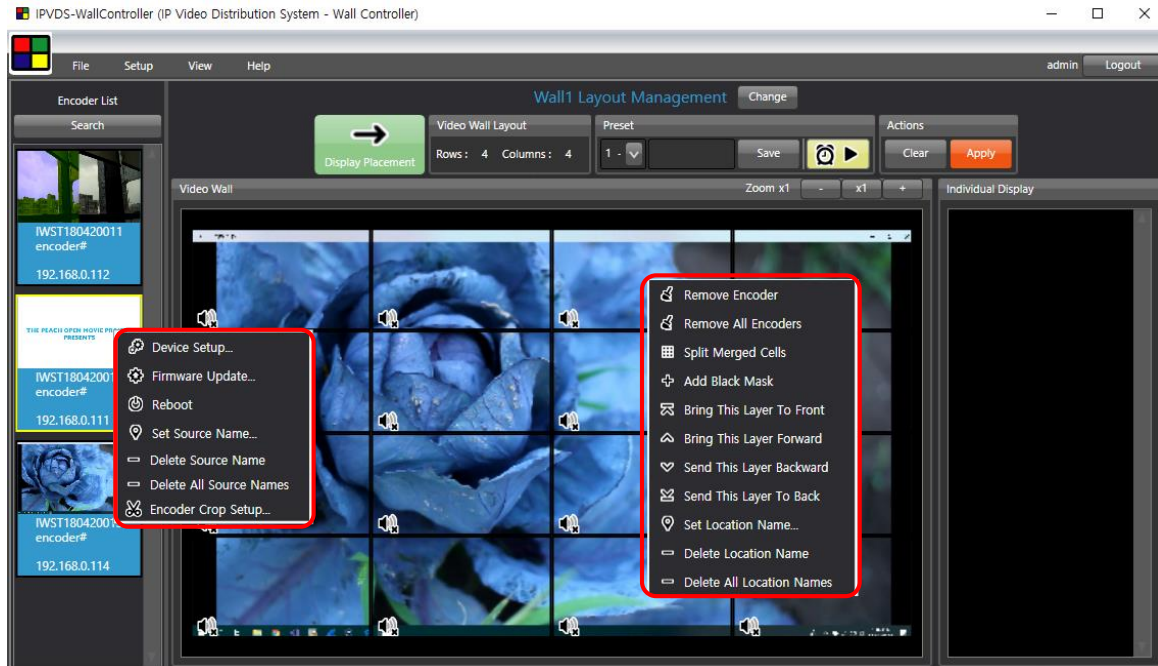


Figure. 30 Layout Management Context Menu

(1) Device Setup.

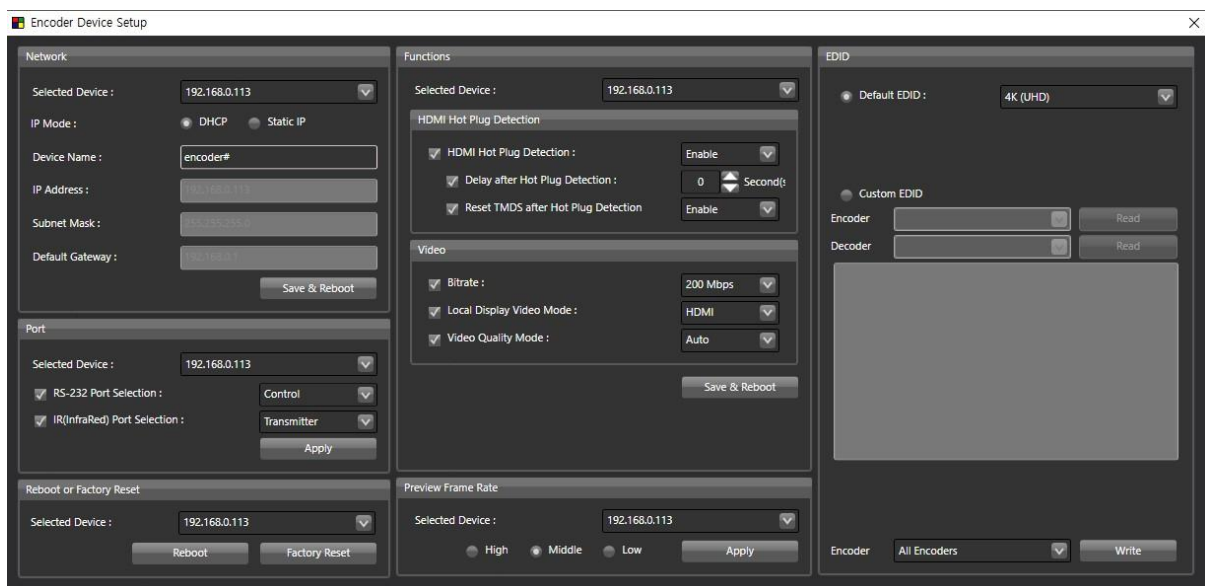


Figure. 31 Encoder Device Setup

a) Network Information Setup

- DHCP IP(dynamic) / STATIC IP(static)

- Device name : Set the name of encoder device
English (No Korean), Special symbol (+ , - , _ , #), maximum 20 character
- Will be applied after save and restart.

Figure. 31-1 Encoder Device Setup – Network Management

b) Port

- RS-232 Port: For serial device control or encoder debug purposes.
- IR Port: For IR transmitters or IR receivers.

Figure. 31-2 Encoder Device Setup – Port

c) Reboot or Factory Reset

- Select all or individual encoders to reboot or factory reset

Figure. 31-3 Encoder Device Setup – Reboot or Factory Reset

d) HDMI Hot Plug Detection



Figure. 31-4 Encoder Device Setup – HDMI Hot Plug Detection

If video is not transmitted due to mismatch of sync timing of encoder and display after restarting display which is connected to the local display port of encoder, following setup will resolve the problem.

➤ **HDMI Hot Plug Detection**

- ✚ Enable (default): Initializes HDMI output when HPD detected.
- ✚ Disable: Ignore HPD signal.

➤ **Delay after Hot Plug Detection**

- ✚ Operates on HDMI Hot Plug Detection is Enabled.
- ✚ Time: 0 sec (default) ~ 300 sec.

When the HDMI HPD signal is detected, it initializes the HDMI output after waiting for the set time.

➤ **Reset TMDS after Hot Plug Detection**

- ✚ Operates when HDMI Hot Plug Detection is Enabled.
- ✚ Disable: Maintains TMDS line even after HPD is detected
- ✚ Enable(Default): Initializes TMDS line when HPD is detected

e) **Video**

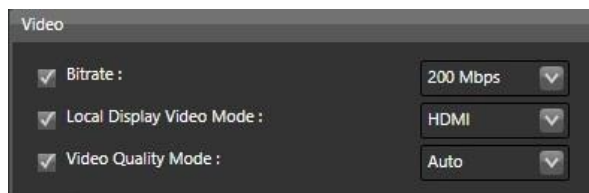


Figure. 31-5 Encoder Device Setup – Video

➤ **Bitrate**

Select Bitrate speed depends on the image quality and network condition.
50/100/150/**200(Default)**/Best [Mbps]

It is recommended to set all encoders with same Bitrate
Apply Save & Reboot

➤ **Local Display Video Mode**

When receiving DVI signal as encoder source input, certain displays might not transmit video signal from local display port of IPVDS encoder. If not receiving video signal on the display, forcibly change local display output as HDMI or DVI to resolve the problem.

➤ **Video Quality Mode**

Transmitting best quality in 'Auto' mode and can be selected in six steps (Very High, High, Middle High, Middle Low, Low, Very Low) in manual mode.

f) **Preview Frame Rate**

- Change the preview frame speed to High / Middle / Low.
- Preview frame rates are related to HID keyboard and mouse performance. Setting 'Low' is recommended for using KVM function.

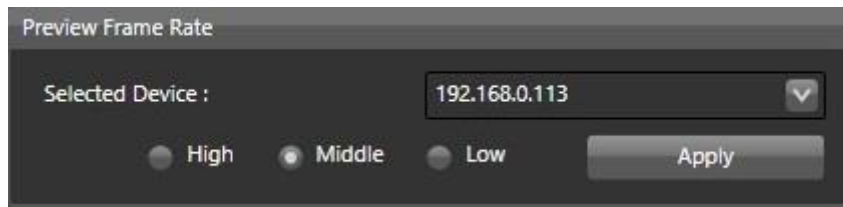


Figure. 31-6 Encoder Device Setup – Preview Frame Rate

g) **EDID Read/Write**

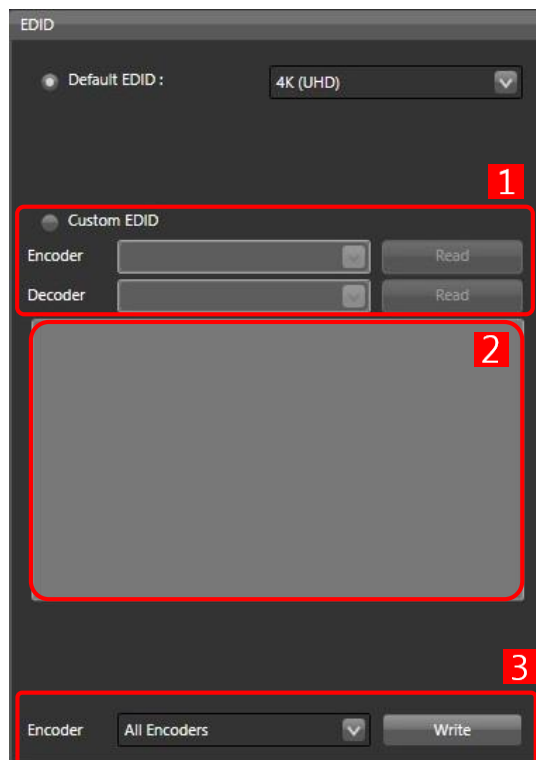


Figure. 31-7 Encoder Device Setup – EDID Setup

- **1** Select IP address for Encoder/Decoder and click '**Read**' button to load EDID information from display that is connected to the device

IPVDS-700-E (Encoder) does not support EDID read function.

- Read EDID information will be addressed on **2**
- **3** Select all Encoders or particular Encoder device and click 'Write' button.
- EDID of Encoder will be changed and it will be applied after reboot.
- By checking Default 4K UHD or Default 2K FHD, fixed 4K/2K EDID will be set instead of reading and writing EDID of the monitor connected to the device.

Default EDID 4K UHD, 2K FHD

Custom EDID: EDID of the monitor connected to the device

(2) Firmware Update

6.2.2 Refer to **Ribbon menu (7) Firmware update** (page 9).

(3) Source Name Setup

Set the video source name

- English, Korean, Special symbol, maximum 20 characters

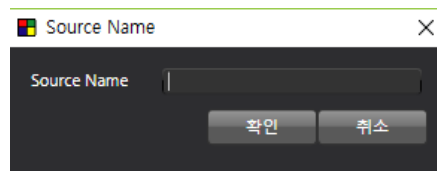


Figure. 32 Source Name

- Source name will be appeared on the top right corner of each display.

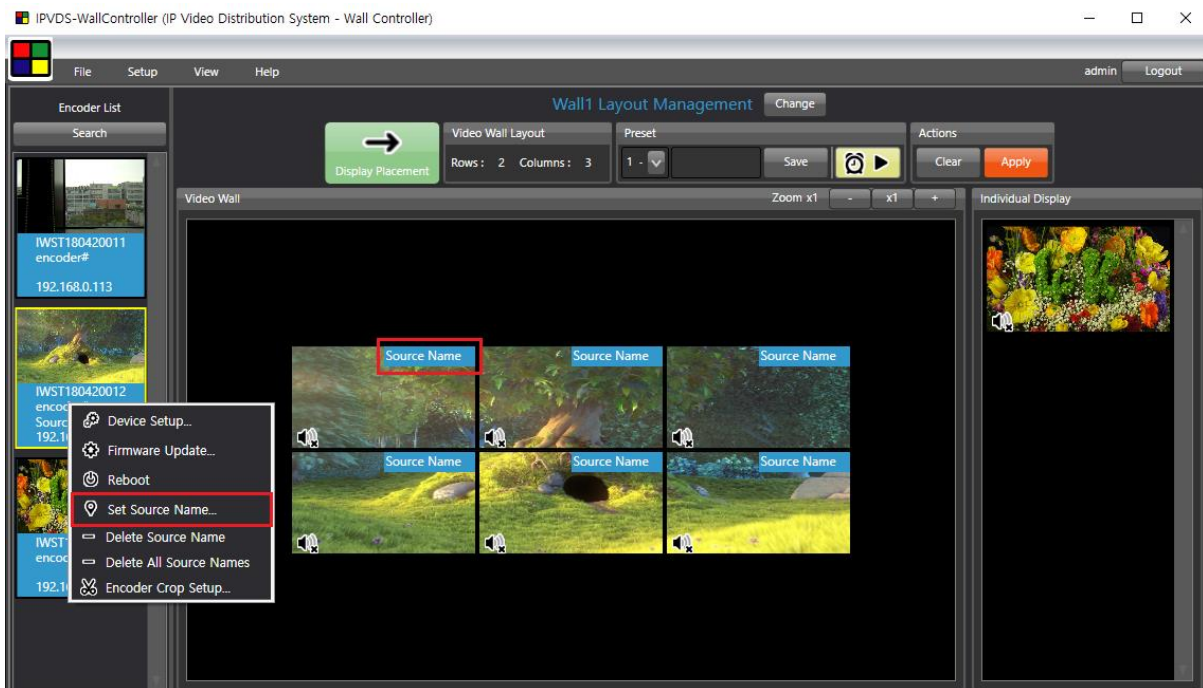


Figure. 33 Source Name Setup

(4) Source Name Remove / All Source Name Remove

Remove source name separately, or entirely.

(5) Encoder Crop Setup

- Crop an image in row and column (max 256, 16x16 ~ 4x64 ~ 1x256) and select.
- Transmit selected video part of display source.

Note 1. Crop setup requires **Pro version UPDATE** to use.

Note 2. Crop setup will not apply video transmission to the local display.

Step 1

Set row and column for the desired image size.

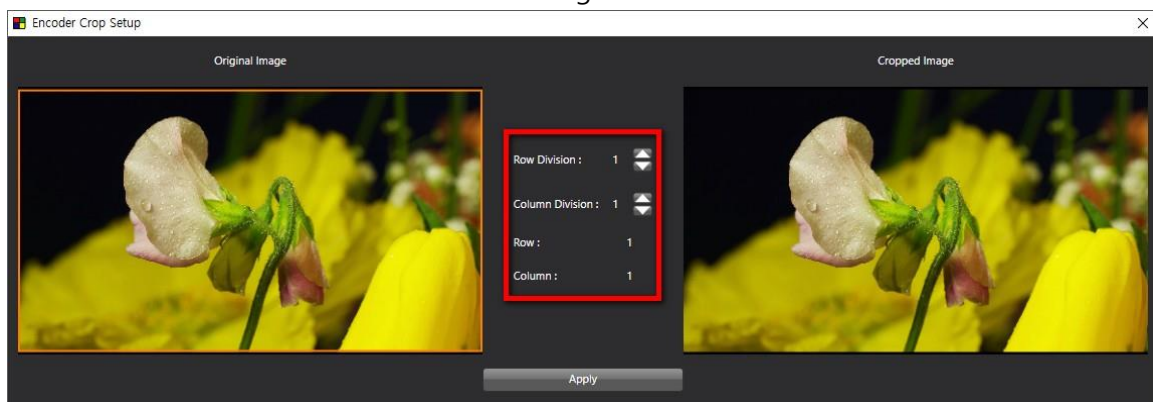


Figure. 34 Encoder Crop Setup

Step 2

Select cropped image which need to appear on the display. Selected image will be shown on the right display on the window. Click '**Apply**' button and close Encoder Crop Setup window to go back to main screen.

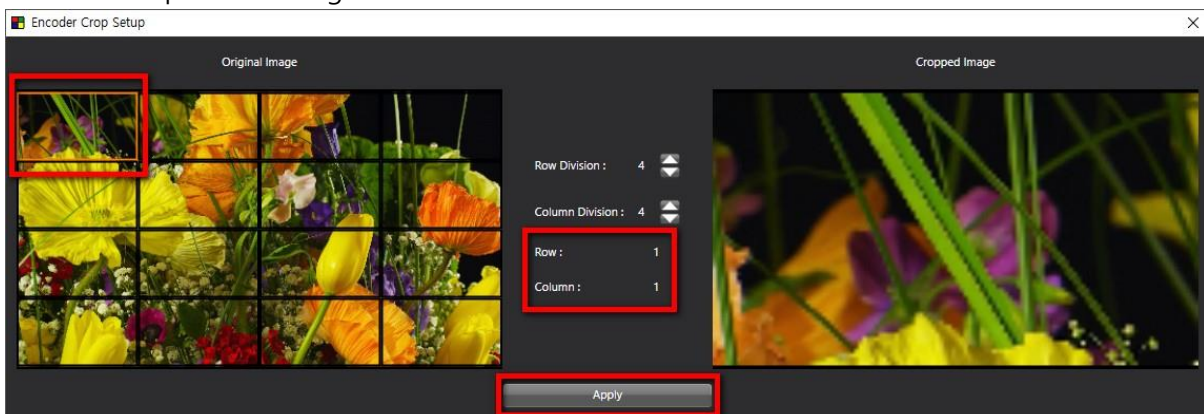



Figure. 35 Encoder Crop Setup Apply

Step 3

Crop icon () will be created on top right corner of source under Encoder List.

Crop setup window will pop up when clicking 'Crop' icon.

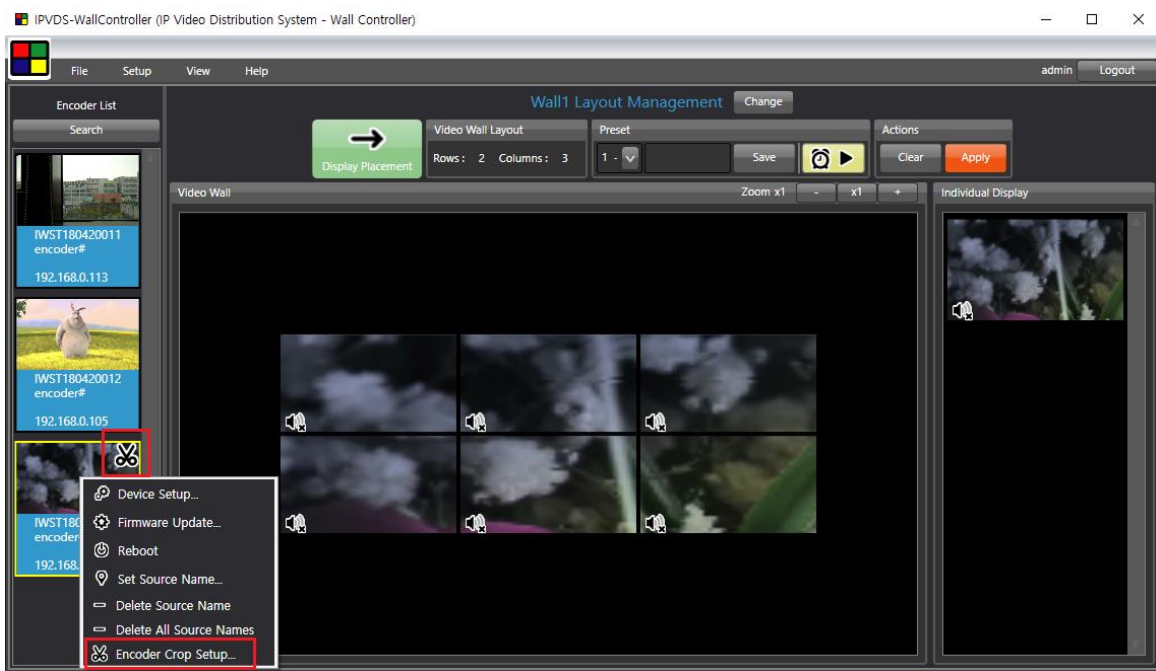


Figure. 36 Encoder Crop Display

3.1.2 Video Wall Context Menu

(1) Remove Encoder

Remove selected video source from video wall layout. All encoder sources will be discarded from video wall layout when clicking 'Remove All Encoders'.

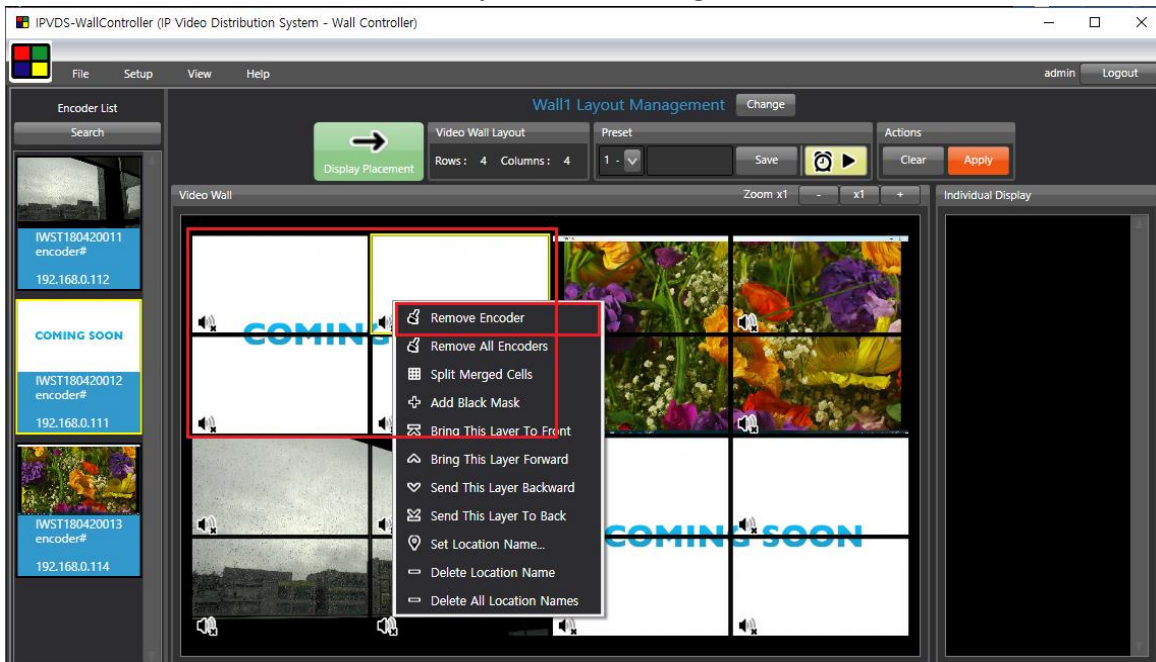


Figure. 37 Encoder Remove Setup

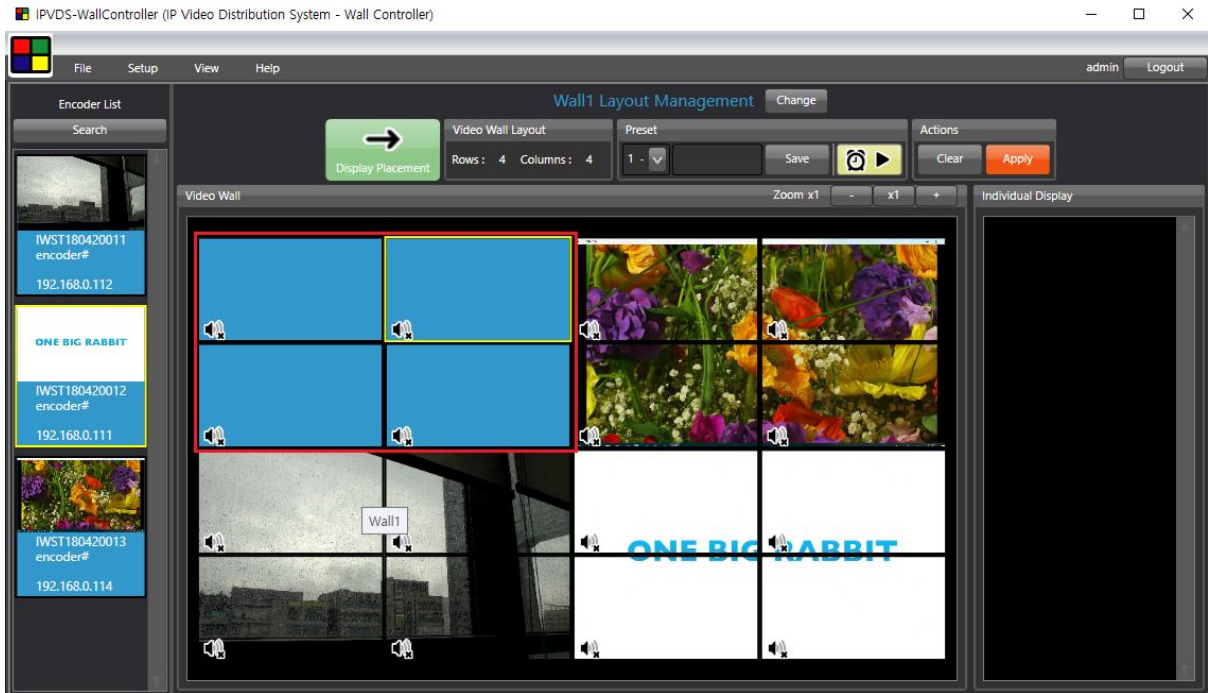


Figure. 38 Encoder Remove

(2) Split Merged Cells

Change stretched video wall source (M x N) to 1 x 1 video source.

After change, 1 x 1 merged video source will be placed on top left corner of the existing cells.

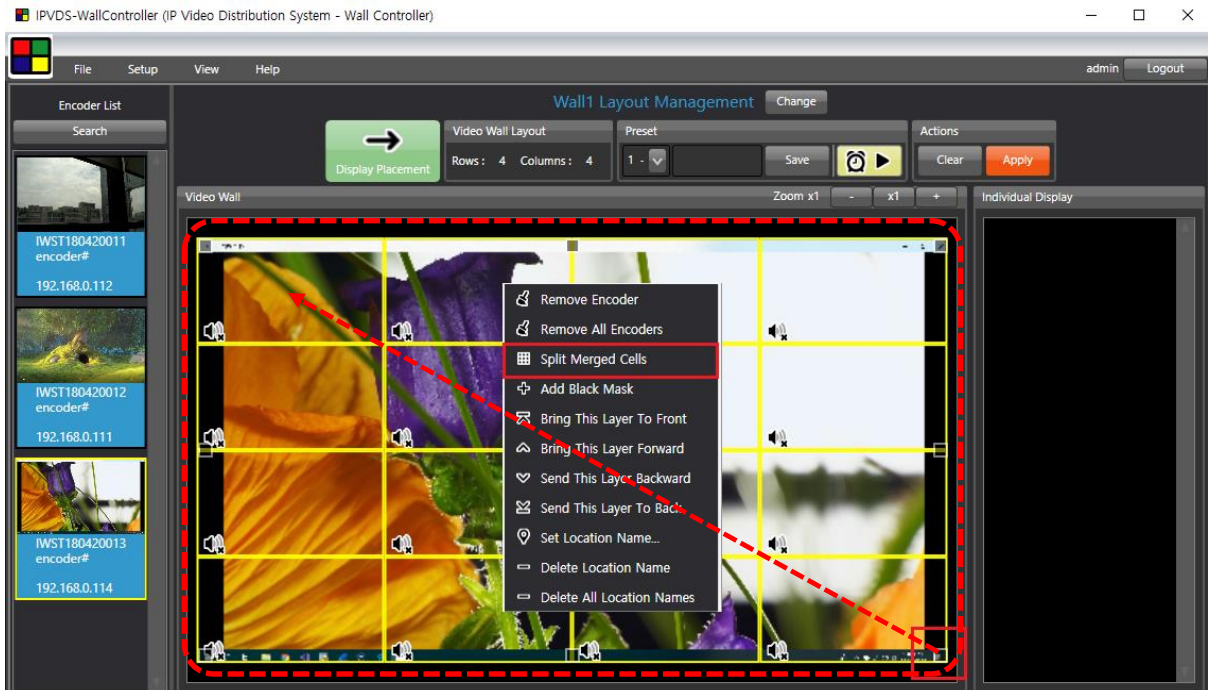


Figure. 39 M x N Merge

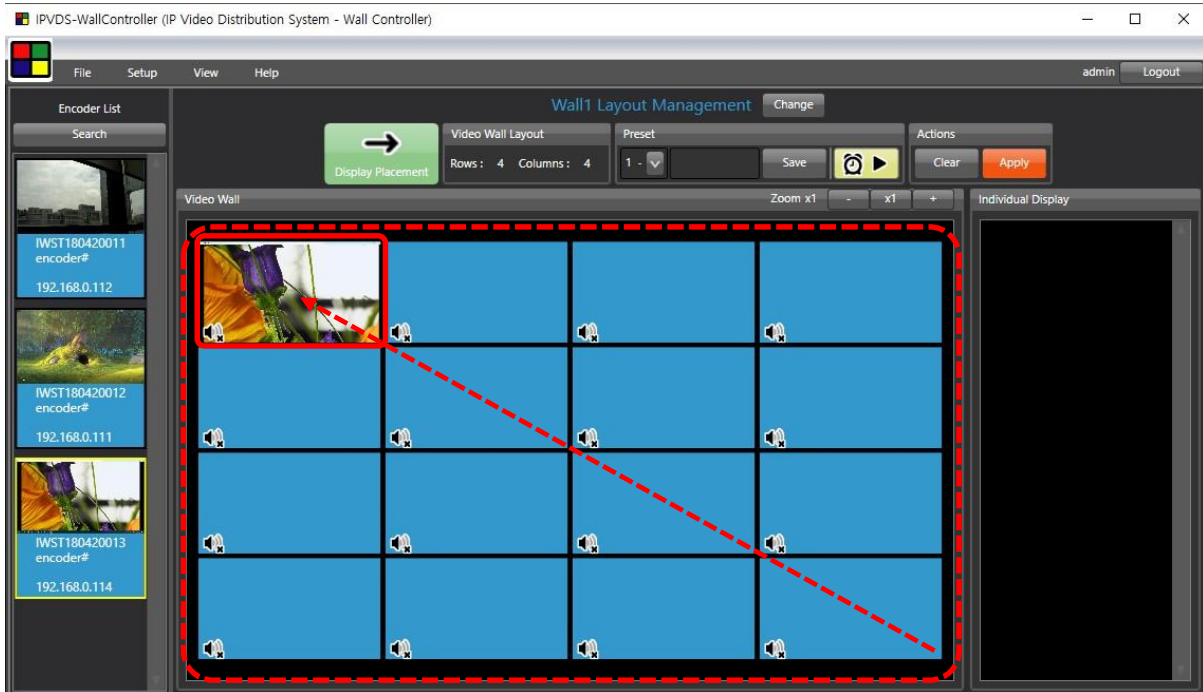


Figure. 40 Split Merged Cell

(3) Add Black Mask

Replace selected cell to the black mask.

When applied, selected display will switch over to black-out state.

Black mask can be removed with '**Encoder Remove**' button.

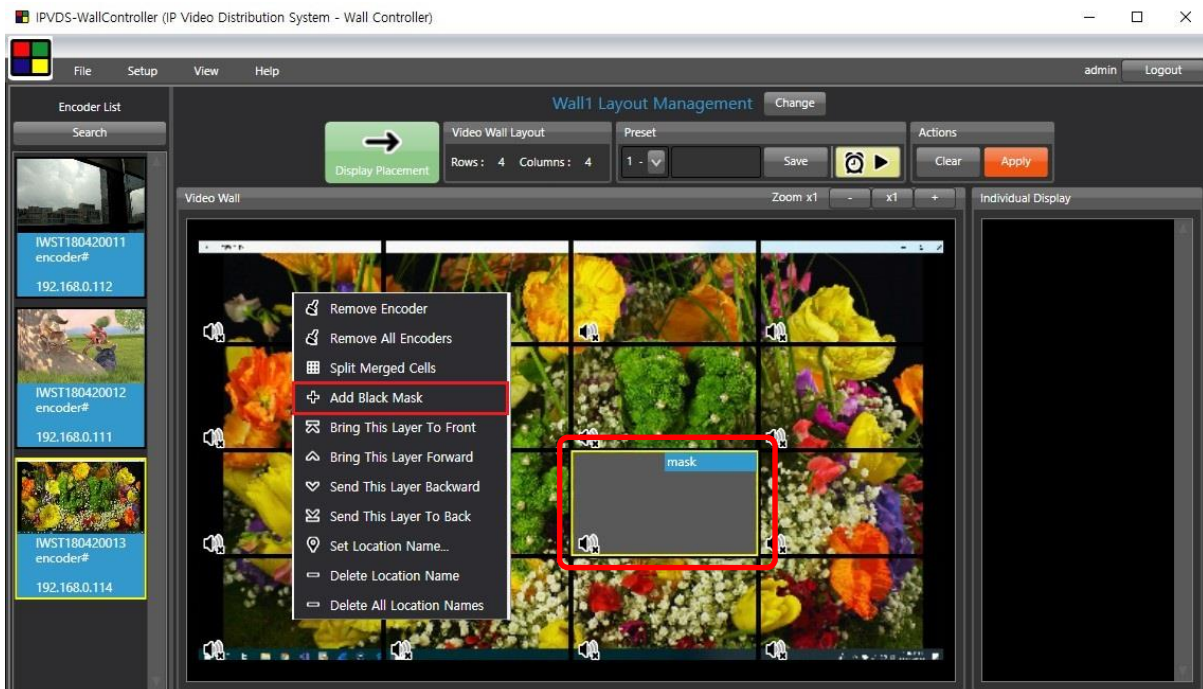


Figure. 41 Add Black Mask

(4) Bring/Send Layer

Bring and send overlaid layer to the front(forward) or back(backward).
 Foremost source will appear on the display.

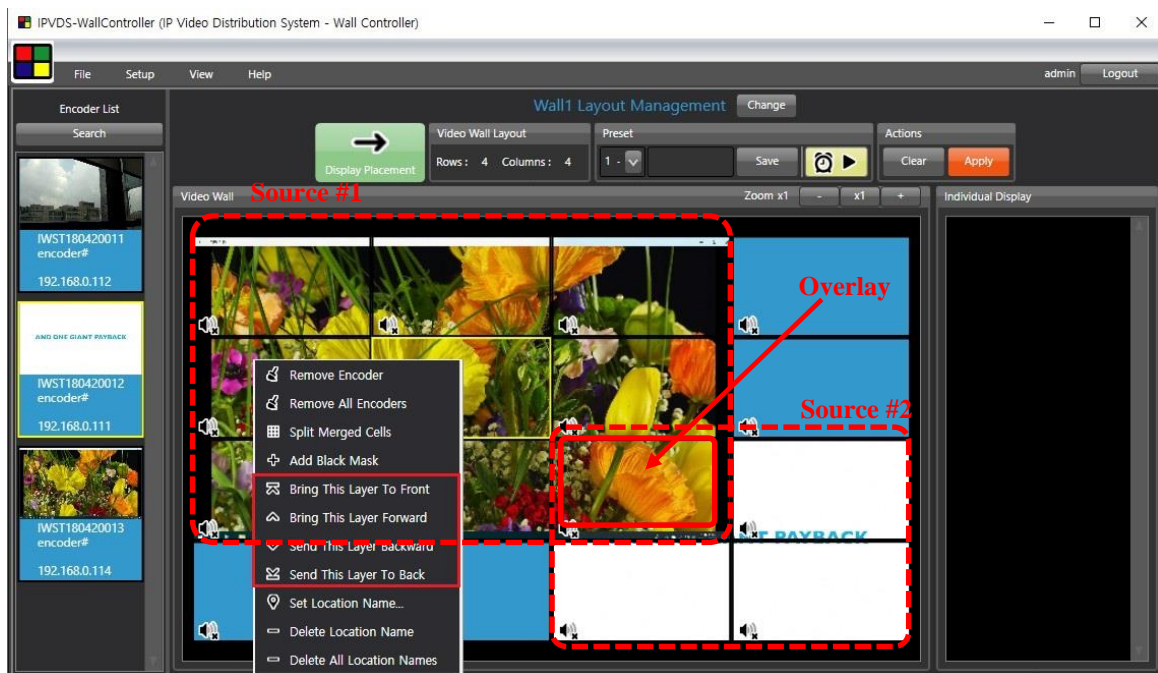


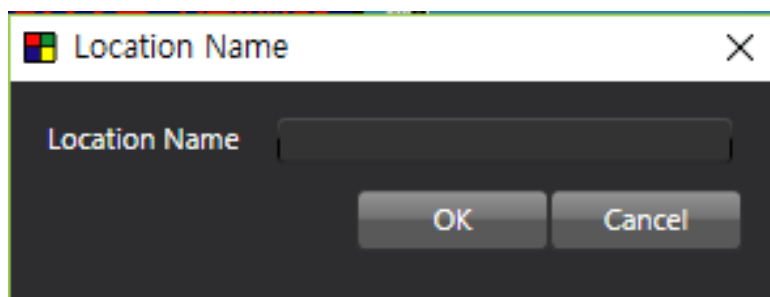
Figure. 42 Layer Overlay

(5) Set Location Name

PC application allows user to set location name for the display.

With this function, user can manage installation site, location of the display.

- English, Korean, Special symbol, maximum 20 characters.



- Location name will be appeared on the top left corner of each display.

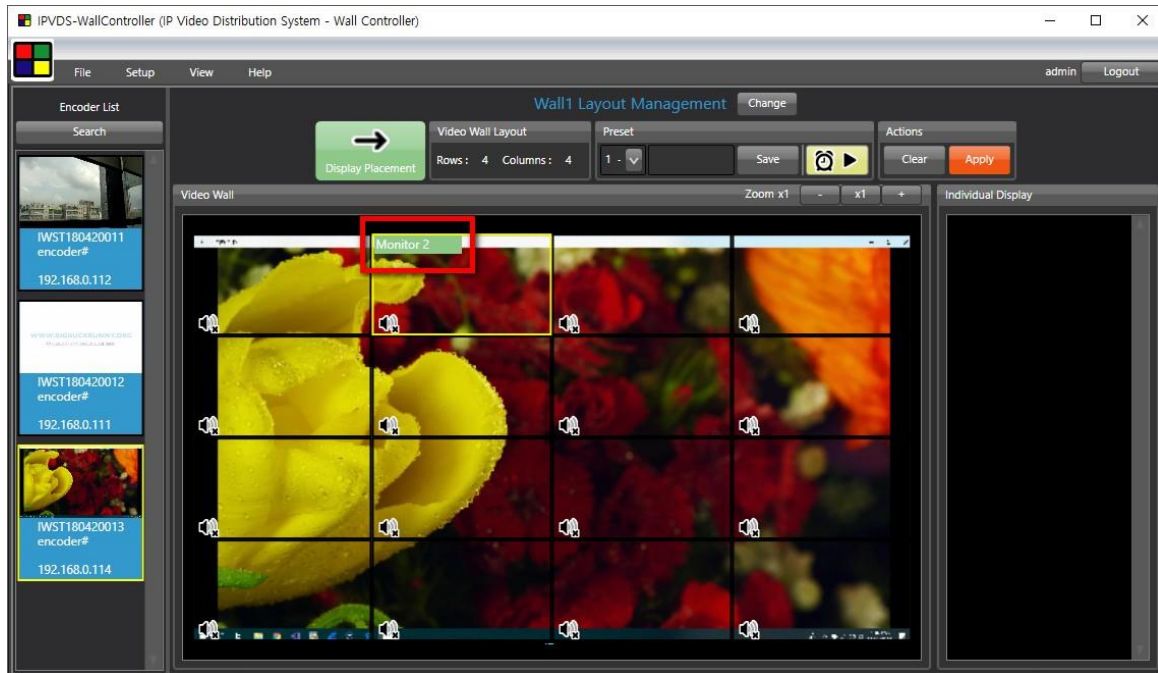


Figure. 43 Set Display Location Name

(6) Remove Location Name / Remove All Location Name

Remove location name separately, or entirely.

3.2 Display Placement Context Menu

3.2.1 Decoder List Context Menu

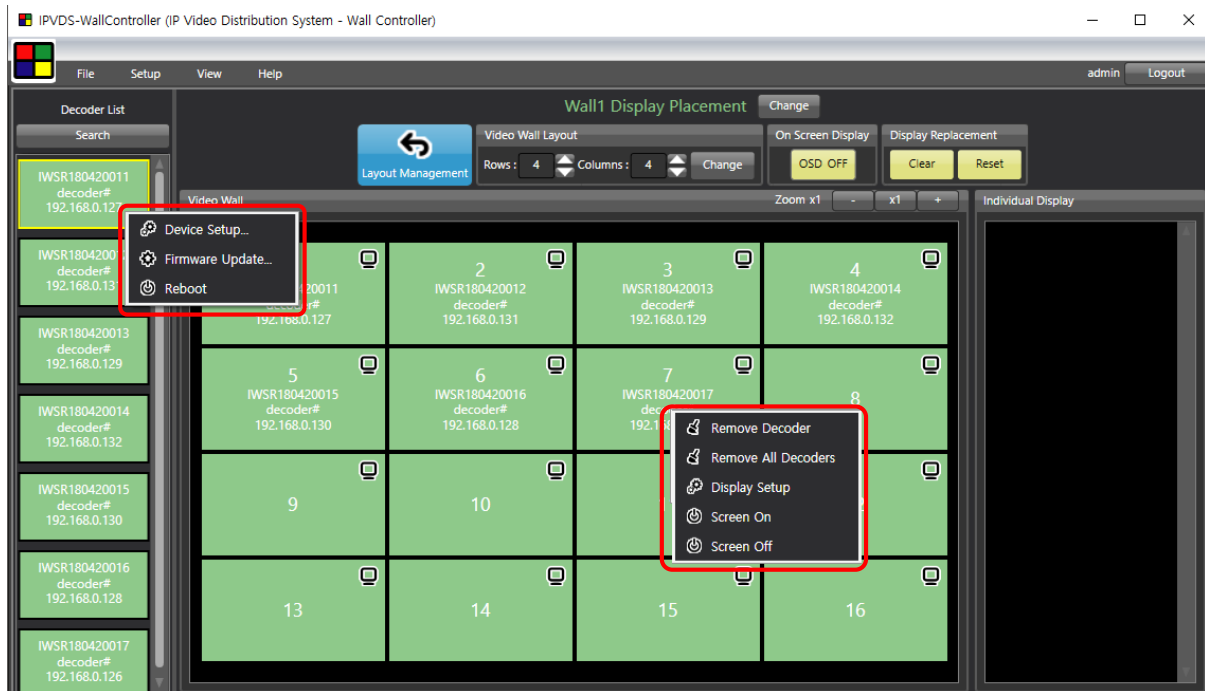


Figure. 44 Display Placement Context Menu

(1) Device Setup

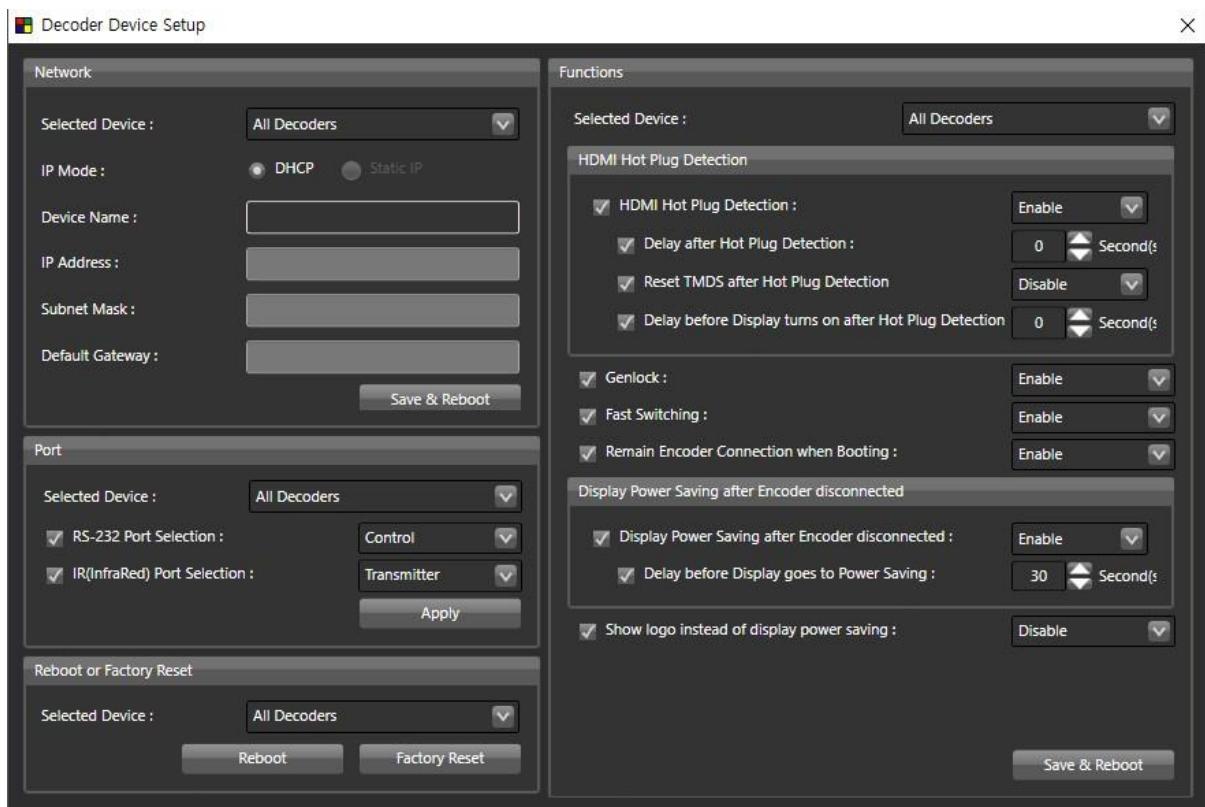


Figure. 45 Decoder Device Setup

a) Network Information Setup

- DHCP IP(dynamic) / STATIC IP(static)
- Device name: Set decoder device name.
English (no Korean), Special symbol (+ , - , _ , #), Maximum 20 characters.
- Will be applied after save and restart.

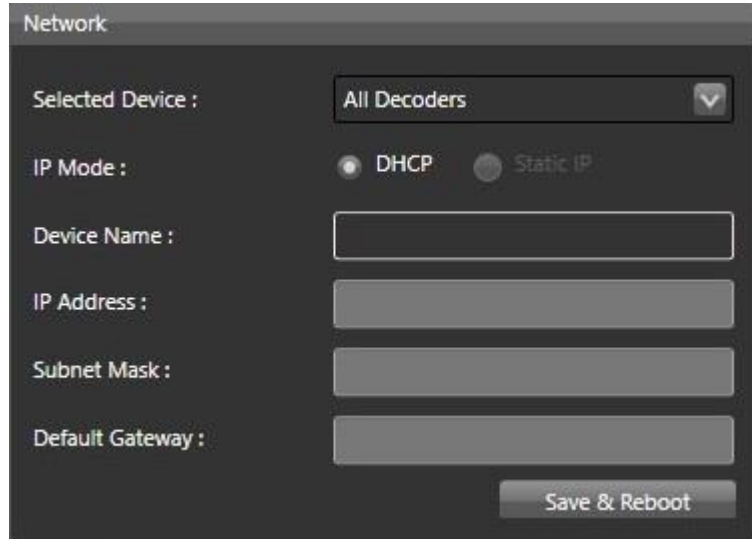


Figure. 45-1 Decoder Device Setup – Network Setup

b) Port

- RS-232 Port: For serial device control or encoder debug purposes.
- IR Port: For IR transmitters or IR receivers.

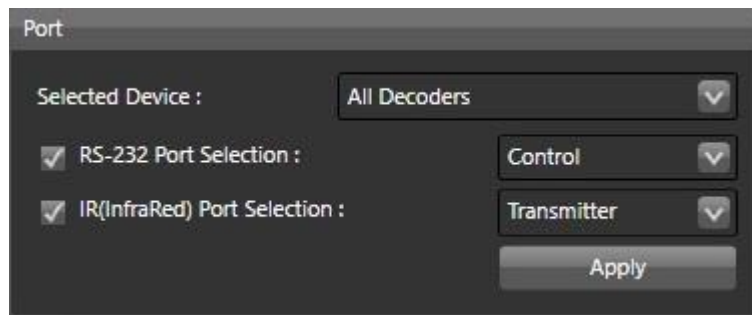


Figure. 45-2 Decoder Device Setup – Port

c) Reboot or Factory Reset

- Select all or individual decoders to restart or factory reset

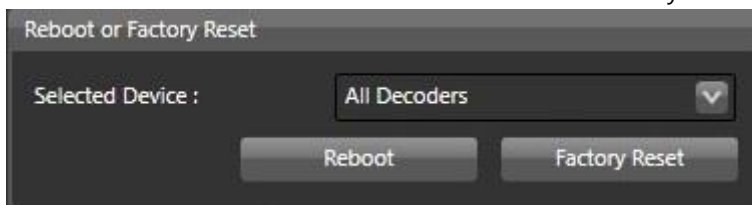


Figure. 45-3 Decoder Device Setup – Reboot or Factory Reset

d) HDMI Hot Plug Detection

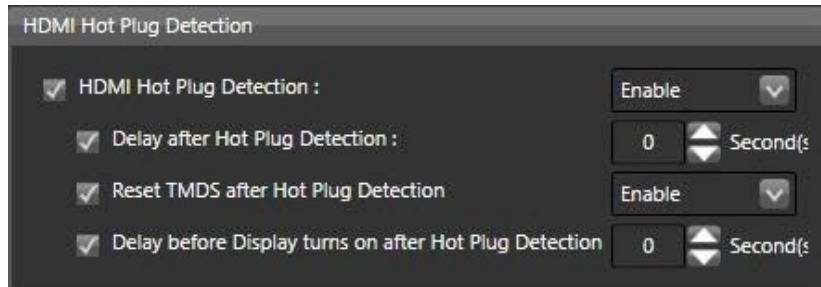


Figure. 45-4 Decoder Device Setup – HDMI Hot Plug Detection

If video is not transmitted due to sync timing mismatch of decoder and display after restarting of display, following setup will resolve the problem.

➤ HDMI Hot Plug Detection

- ✚ Enable (default): Initializes HDMI output when HPD detected.
- ✚ Disable: Ignore HPD signal.

➤ Delay after Hot Plug Detection

- ✚ Operates on HDMI Hot Plug Detection is Enabled.
- ✚ Time: 0 sec (default) ~ 300 sec.

When the HPD signal is detected, it initializes the HDMI output after waiting for the set time.

➤ Reset TMDS after Hot Plug Detection

- ✚ Operates on HDMI Hot Plug Detection is Enabled.
- ✚ Disable (default): Maintains TMDS line even when HPD detected
- ✚ Enable: Initializes TMDS line when HPD detected

➤ Delay before Display turns on after Hot Plug Detection

- ✚ Operates on HDMI Hot Plug Detection is Enabled.
- ✚ Time: 0 sec (default) ~ 300 sec.

It initializes the display after waiting for the set time, When HPD signal is detected,

e) Display Power Saving after Encoder disconnected

Select to use Display Power Saving mode of display which is connected to decoders when encoder does not exist or disconnected.



Figure. 45-5 Decoder Device Setup – Display Power Saving after Encoder disconnected

- **Enable display power saving after encoder disconnection**
 - ✚ Enable: Power Saving mode activation
 - ✚ Disable: Black screen output with no source or disconnected
- **Delay before Display goes to Power Saving**
Time set before entering power saving mode when source is disconnected.

f) **Decoder Function**



- **Genlock:** Enable or disable the Genlock function.
- **Fast Switching:** Enable or disable fast transitions when switching screens.
- **Remain Encoder Connection when booting:** Enable or disable the retention of previously connected connections when reboot.
- **Show logo instead of display power saving:** Enable or disable logo screen showing on the display at boot time instead of black screen when power saving mode is entered.

(2) **Firmware Update**

Refer to **Ribbon menu (7) Firmware update.** (9 page)

3.2.2 Video Wall Context Menu

(1) Remove Decoder

Remove selected decoder when click '**Remove Decoder**'.

Remove all decoders on the layout when click '**Remove All Decoders**'.

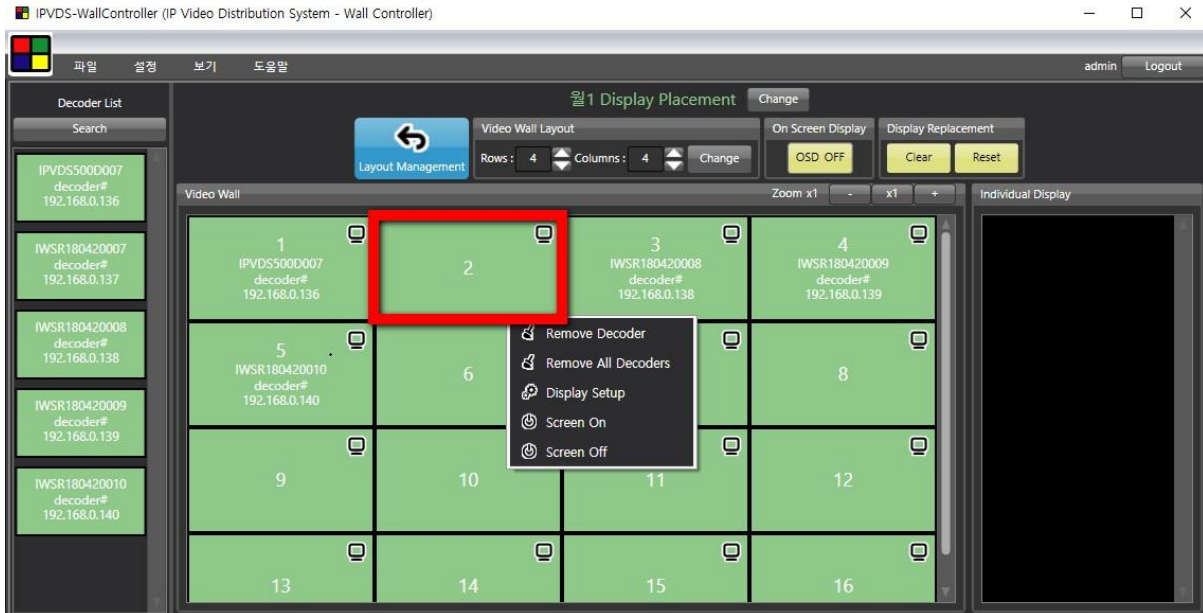


Figure. 48 Remove Decoder

(2) Screen ON.

Turn on screen of selected decoder.

(3) Screen OFF.

Turn off screen of selected decoder.

(4) Display Setup (Decoder layout setup)

a) Bezel and Gap Compensation

As compensating bezel gap which surround display panel, it enables to show natural picture to the screen.

Select 'All Decoders', 'All Encoders' or IP address of designated device, then type bezel value in 0.1mm unit. Click '**Change**' to apply.

- Original Width : General width of display (OW)
- Original Height : General height of display (OH)
- Bezel Width : Width of bezel
- Bezel Height : Height of bezel

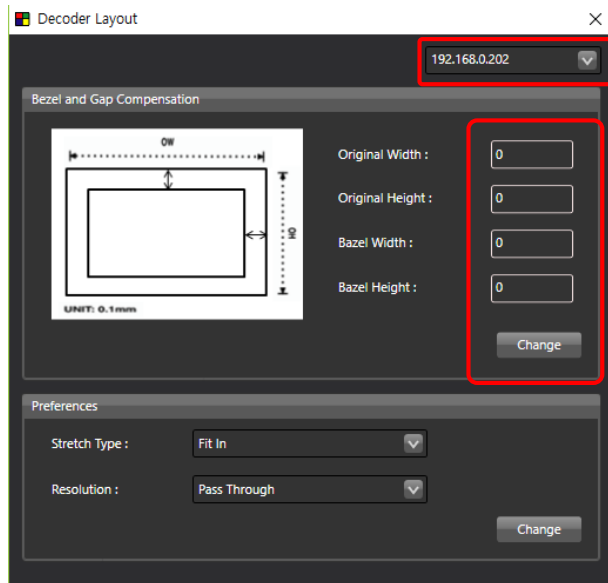


Figure. 49 Display Setup(Decoder Layout) – Bezel and Gap Compensation

b) Resolution setup

Set resolution preference of decoder as 'pass through' or fixed resolution.

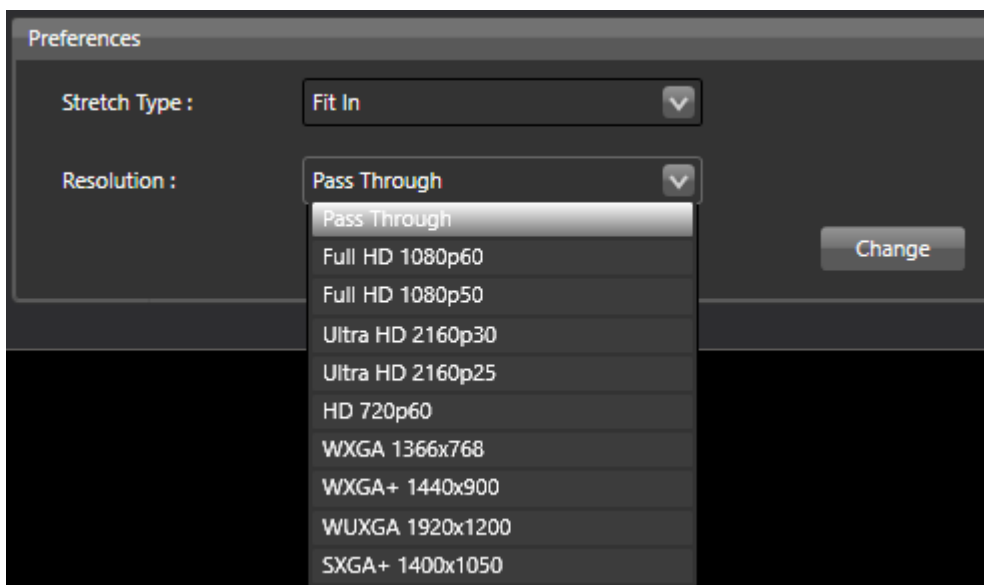


Figure. 50 Display Setup(Decoder Layout) – Resolution Setup

c) Display Fit in/Stretch out

Use 'Fit it' and 'Stretch out' feature for atypical ratio on decoder layout setup.

- ✚ 'Fit in': Reduce or increase size of original source to fit in to the display
- ✚ 'Stretch out': Maintain original ratio as cutting video source to the display.

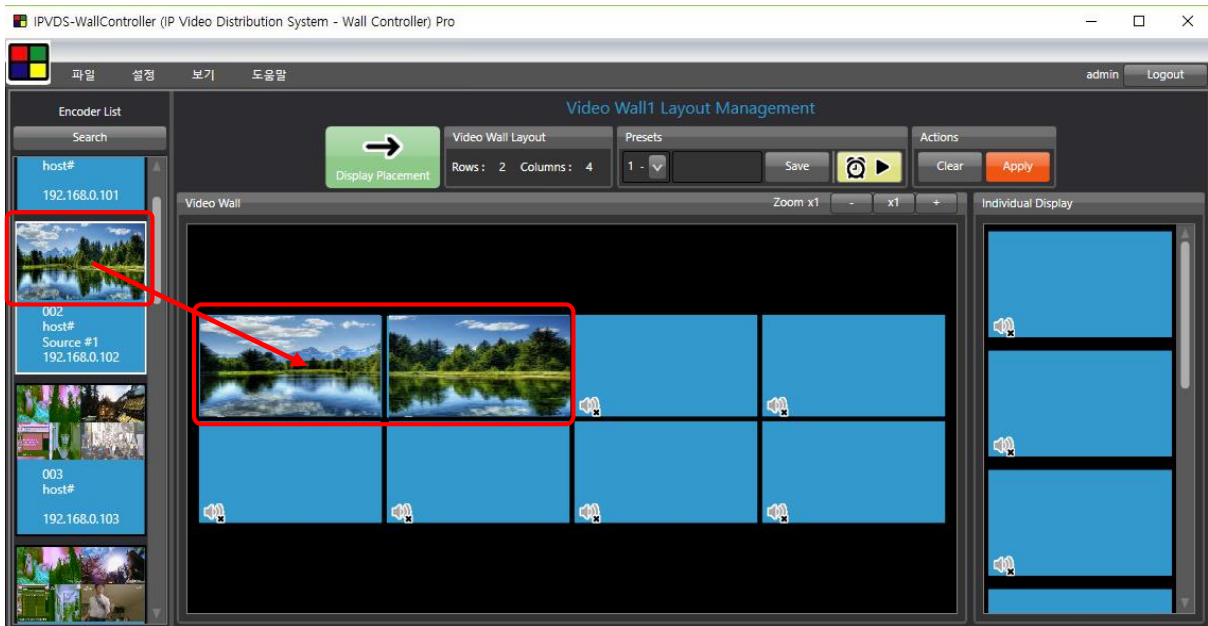


Figure. 51 Placing Video Source to 1 Row 2 Column



Original Video Source



'Fit In' Setup – Display Source Fit into the Display



'Stretch Out' Setup – Cut Out of Bottom Part of Display Source

Figure. 52 Display Output Screen

4. Additional features

4.1 Scheduling feature

IPVDS-WallController provides preset scheduling feature which plays saved preset in order and there are two different mode; Sequence Preset Mode / Weekly Preset Mode.

4.1.1 Sequence Preset Schedule

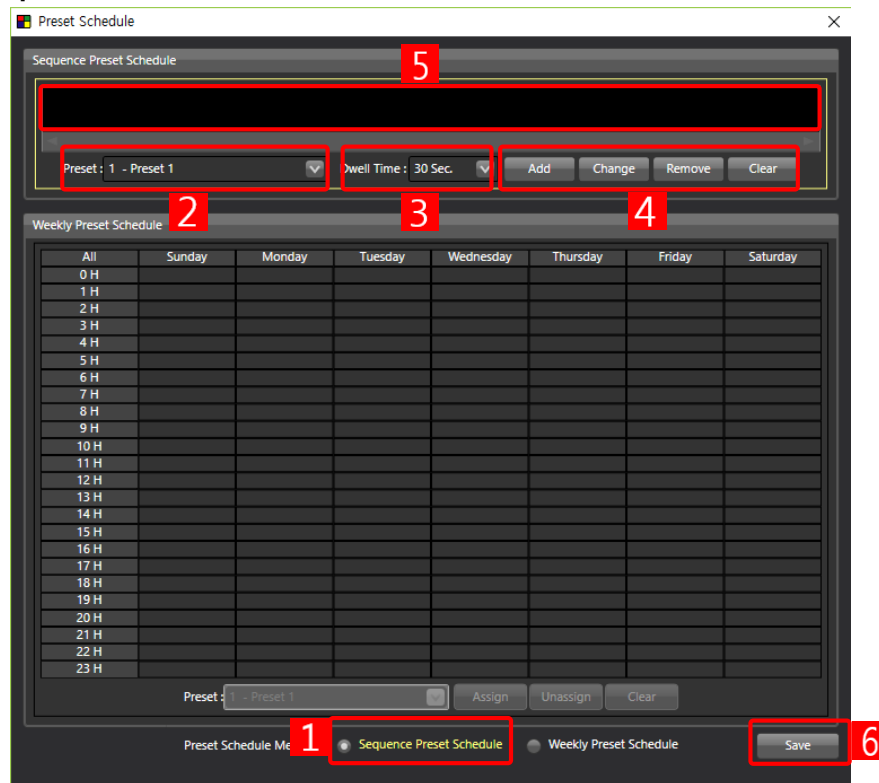


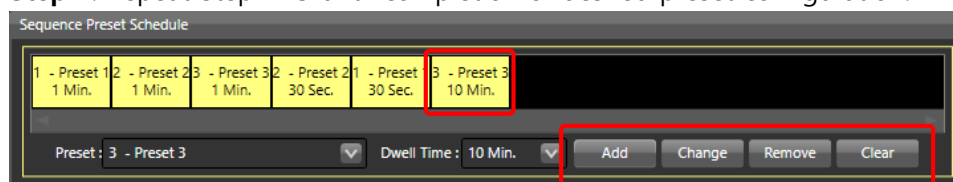
Figure. 52 Setup of Sequence Preset Schedule

Step 1. Select '**Sequence Preset Schedule**' on Preset Schedule Menu **1** to activate Sequence Preset Schedule **5**.

Step 2. Select saved preset from **2** and set dwell time on **3**.

Step 3. Click '**Add**' button on **4**, then selected preset will be set on **5**.

Step 4. Repeat Step 2~3 until completion of desired preset configuration.



Step 5. To change or modify preset sequence, click desired preset from **5** and move, or change its sequence with mouse drag and drop, then click **4** '**Change**'. To remove preset from the list, select particular preset need to be removed on and click **4** '**Remove**'.

Step 6. Click '**Save**' **6** and close the window.

4.1.2 Weekly Preset Schedule

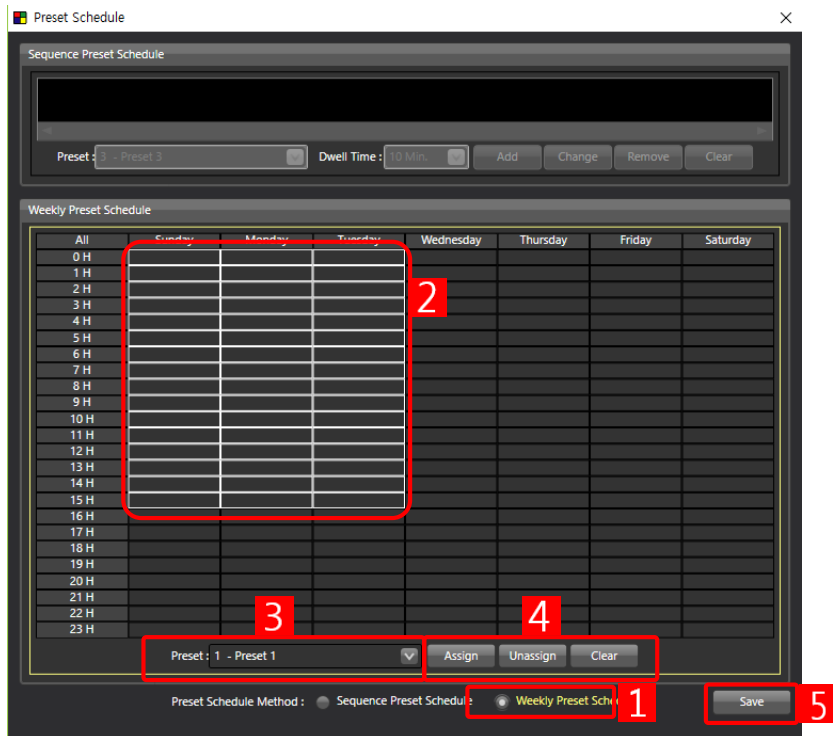
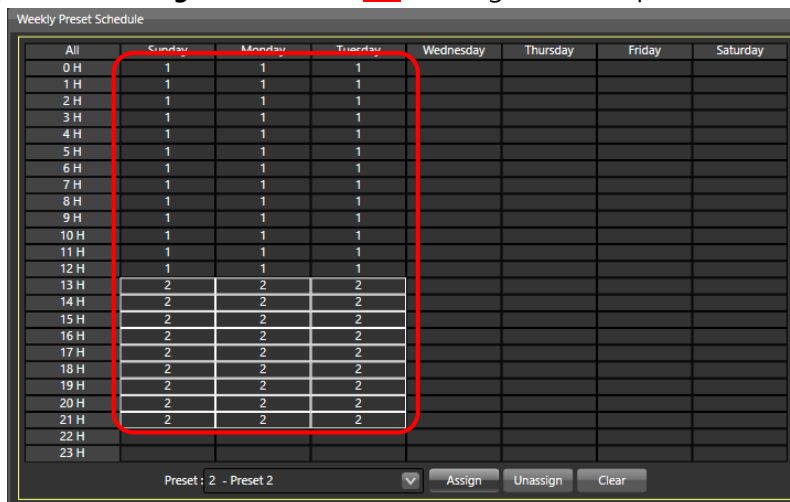


Figure. 53 Weekly Preset Schedule

- Step 1.** Select 'Weekly Preset Schedule' on Preset Schedule Menu **1** to activate Weekly Preset Schedule.
- Step 2.** Click designated time schedule or drag and select region on **2**.
- Step 3.** Select saved preset from **3**.
- Step 4.** Click 'Assign' button on **4** to assign selected preset on that region.



- Step 5.** To change or modify, click 'Unassign' on **4** to empty selected region, or click 'Clear' to empty the entire region.
- Step 6.** Repeat Step 2~4 to make desired weekly schedule and click 'Save' **5** and close the window

4.1.3 Operate Scheduling

Once 'Sequence Schedule' or 'Weekly Schedule' setup is done, user can operate scheduling feature with '**Start Preset Scheduling**' button on layout management.

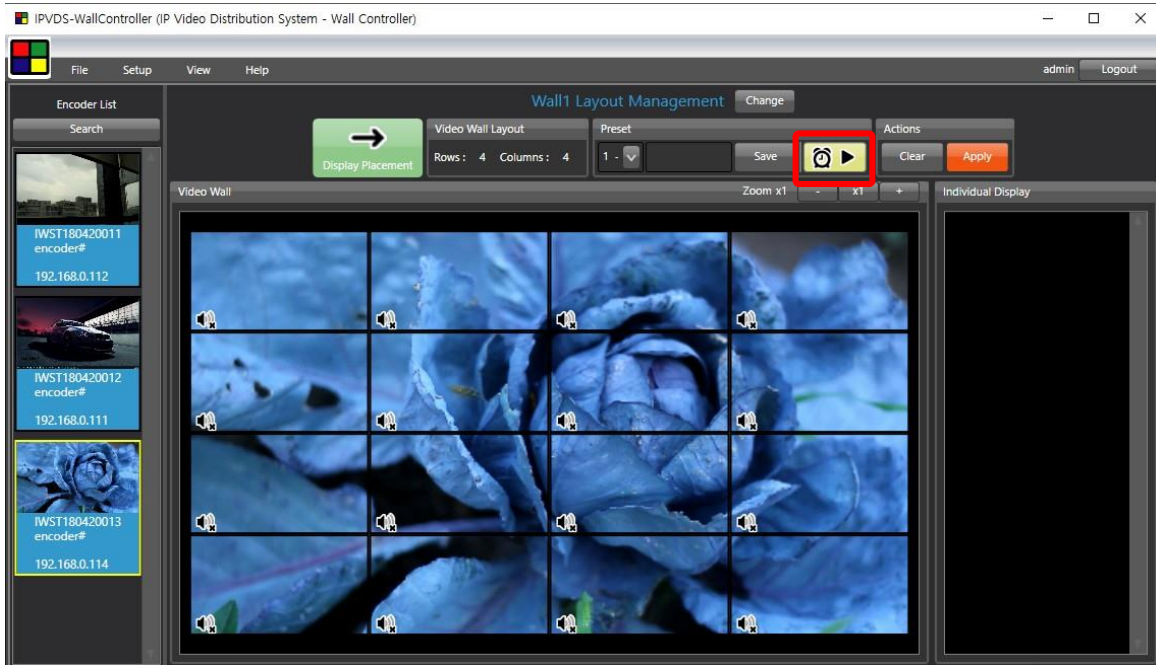
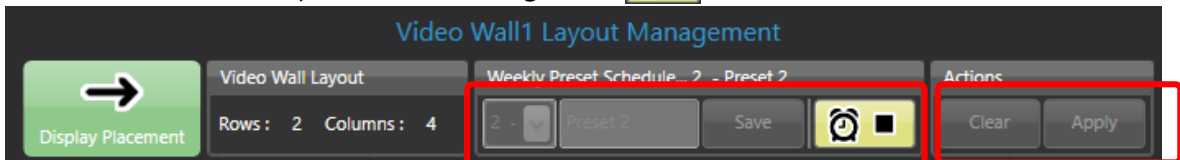


Figure. 54 Start Preset Scheduling

Once Preset Scheduling is activated, 'Start Preset Scheduling' icon will be changed, And click 'Stop Preset Scheduling' icon() to deactivate.



Note: All other function is disabled when using Preset Scheduling.

Important: Control PC has to be connected to the network to use Preset Scheduling.

4.2 Multiple Video Wall

Multiple Video Wall feature enable to control isolate control of each video wall when various video walls need to be installed and controlled in different site.

Multiple Video Wall feature only operate with **Pro** PC application.

Step 1.

Ribbon Menu > Setup > Environment Setup > Video Wall Type

Select Multiple Video Wall and click 'Apply' button.

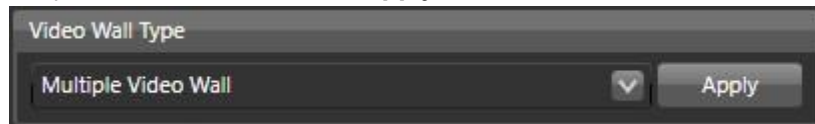


Figure. 55 Apply Multiple Video Wall

Step 2.

Register license key.

Note: Multiple Video Wall feature requires IPVDS Pro PC application and license key to use. Please contact regional distributor or tosales@opticis.com to obtain the license key.

Step 3.

Now, PC application will be changed to Pro version, and user can select and set different video wall configuration on **1**.

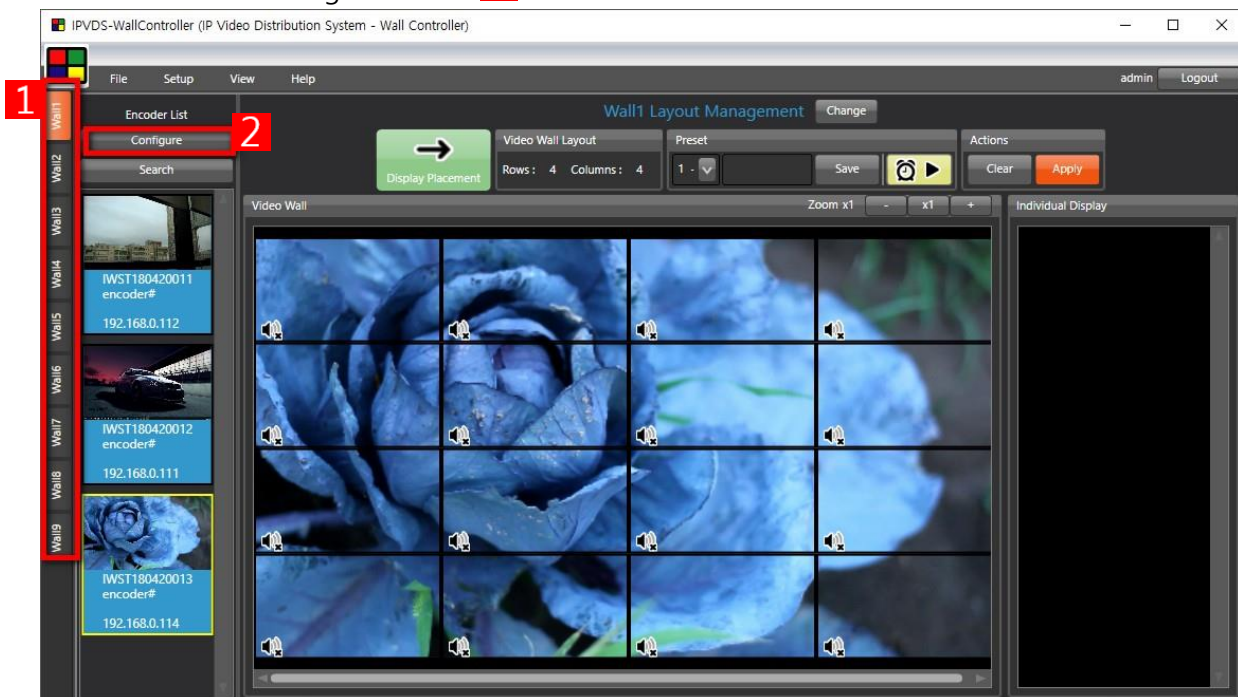


Figure. 56 Pro Version Start-Up Page

Step 4.

Click '**Configure**' button **2** to load device assignment window. Click '**Search**' button to load all the encoder and decoder devices on the network.

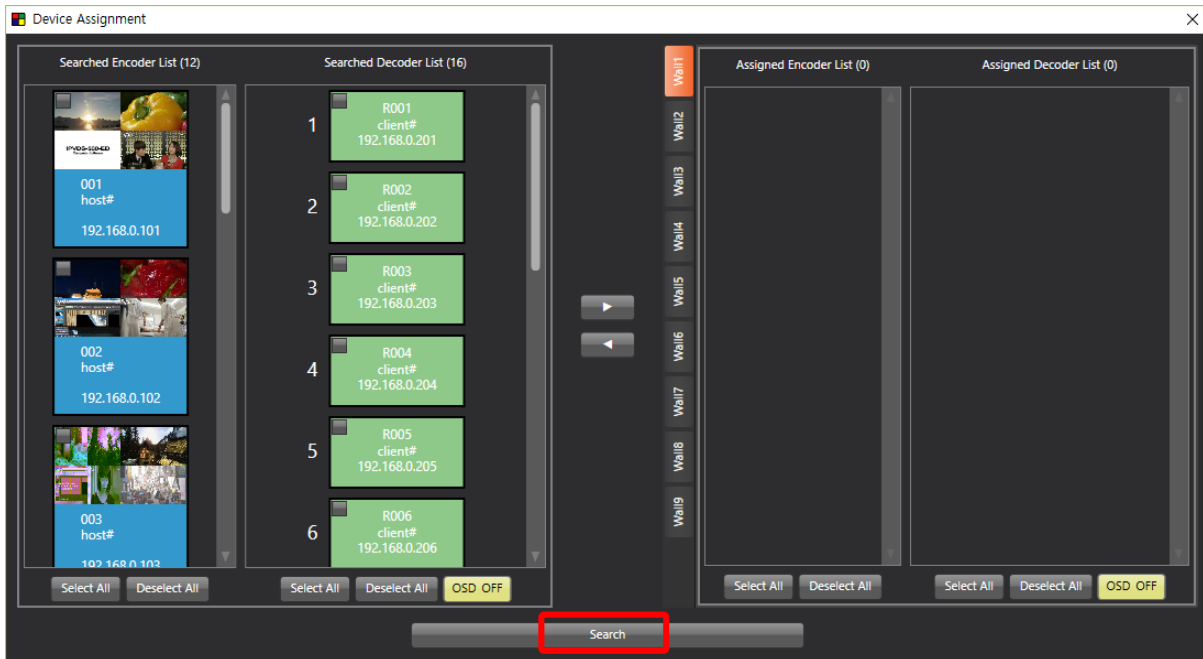


Figure. 57 Device Assignment Window

Step 5.

Select devices as clicking boxes on the top left corner from Searched Encoder List and Searched Decoder List, and click '**Assign**' button (▶).

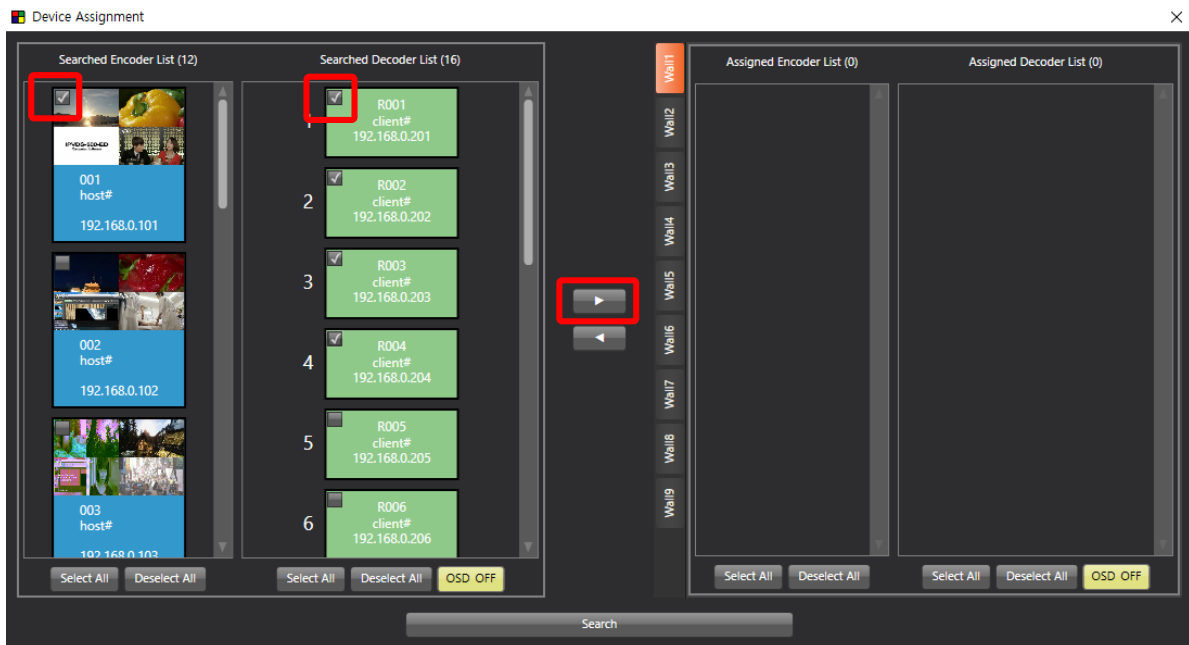



Figure. 58 Device Select and Assign on Wall 1 Tab

Step 6.

Assigned devices can be checked on the Assigned Encoder List and Assigned Decoder List on the right, and use can un-assign device with using 'Unassign' button().

Note: Encoders can be assigned in duplicate for all of multiple video wall tabs.
Decoder can be assigned for one single video wall only, and it will be deleted from Searched Decoder list after assigned for particular video wall.

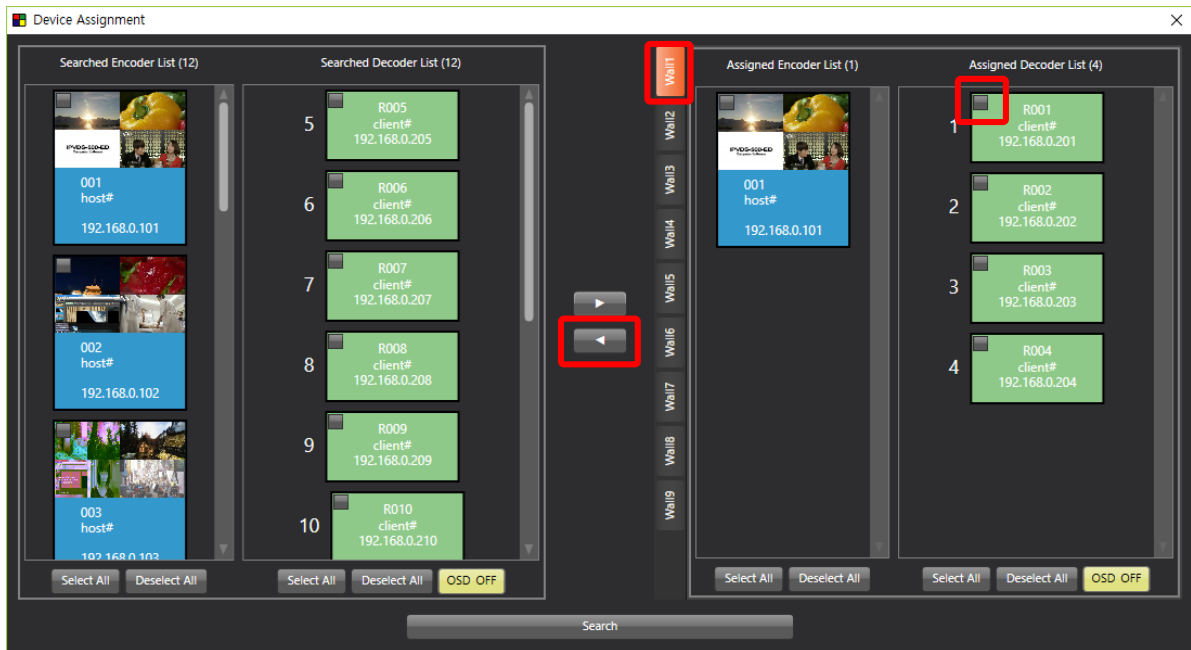


Figure. 59 Un-assign Device

Step 7.

Select Video wall (#2~#9) and repeat Step 5~6 to assign devices, then close window.

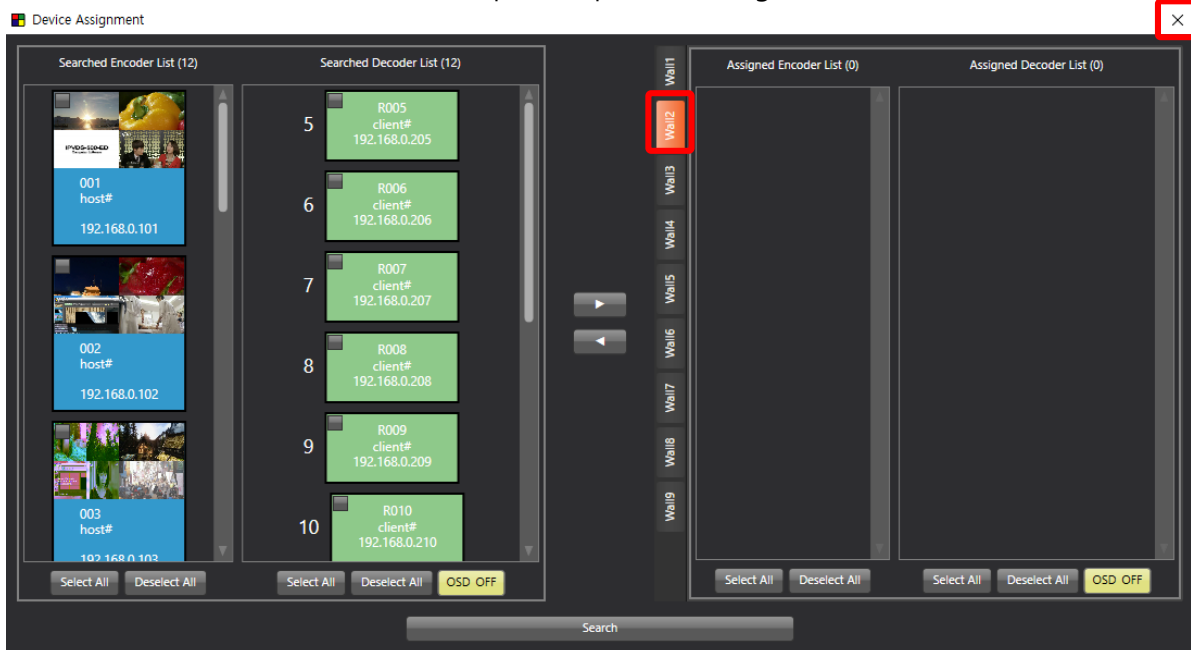



Figure. 60 Change Video Wall Tab

Step 8.

Set layout and assign source for video wall #1~9 and save preset.

When clicking 'Apply' button (), change command will be delivered to particular video wall, and decoders in other tabs will not be changed and maintain existing connection.

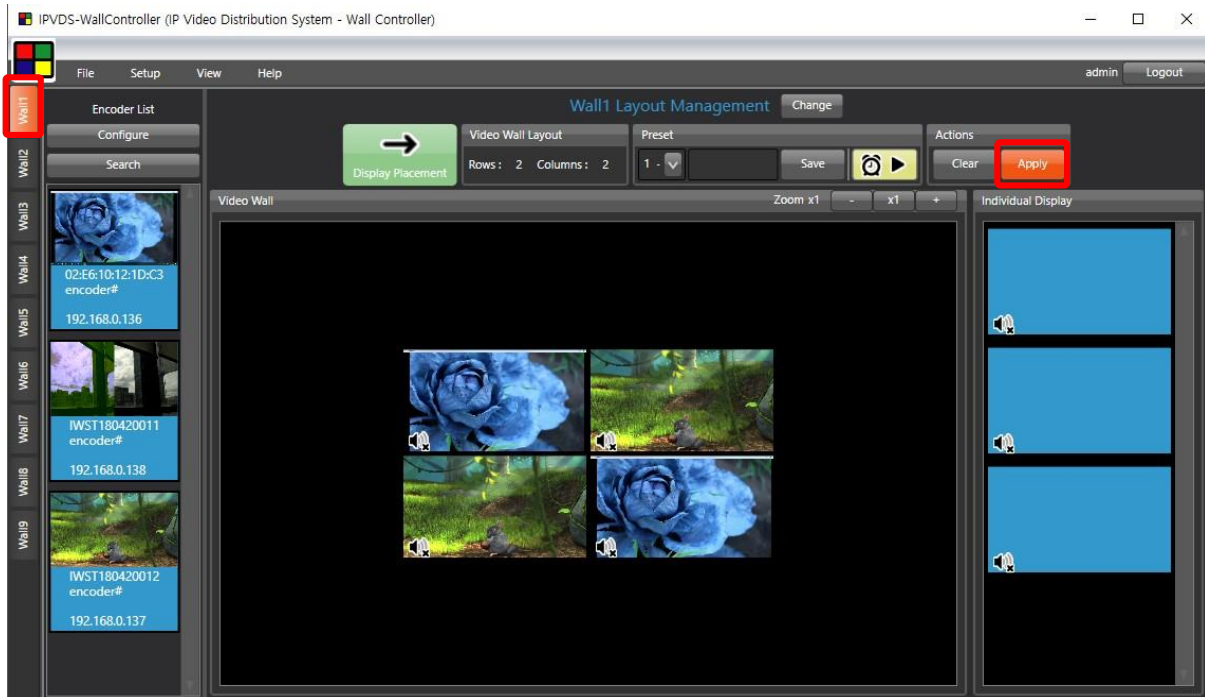


Figure. 61 Wall Tab #1

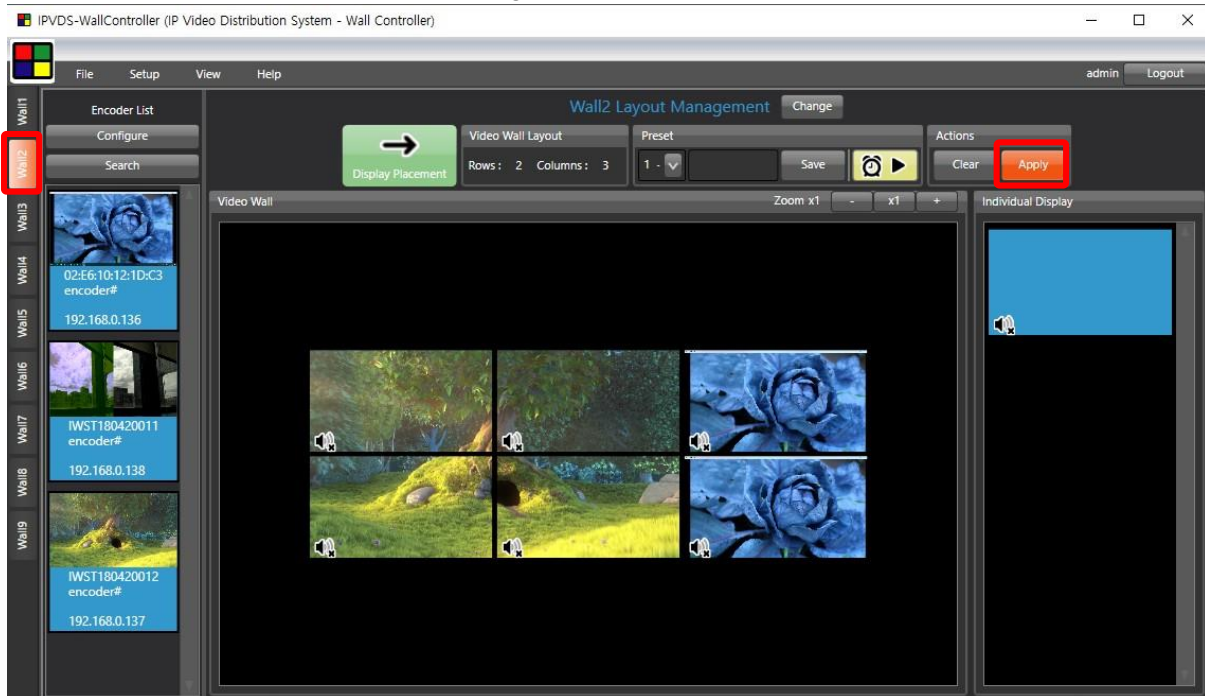


Figure. 62 Wall Tab #2

4.3 Plug-in feature



Figure. 63 Display Monitor Power Control

4.3.1 Integrated Control Program (ICP)

Control power of displays with RS-232 port of the decoder.

ICP (Integrated Control Program) requires separate installation of control program.

Contact tosales@opticis.com or techsupp@opticis.com for additional support.

4.3.2 Product Linkage Control

Product Linkage Control enables integrated control of Opticis products such as HDMI IP Decoding Converter (IPDC), HDMI IP Media Player (MPDS) on one PC application.

Contact tosales@opticis.com or techsupp@opticis.com for detailed information.

5. License

Basic IPVDS-WallController is only available to use for 2 years, and after that preset can't be saved. Renew message will be displayed one month prior to the license expiration, and entering license key will extend one year of using period.

Please contact Opticis to obtain IPVDS-WallController software license key.



Opticis HQ

7F, 166, Jeongjail-ro,
Bundang-gu, Sunnam-si, Gyeonggi-do,
13558 Republic of Korea

Tel: +82 (31) 719-8033
Fax: +82 (31) 719-8032

Please visit Opticis website, www.opticis.com
or contact tosales@opticis.com or techsupp@opticis.com
if you need any technical support.