

## PACKAGE LIST

English



1



2



3



4

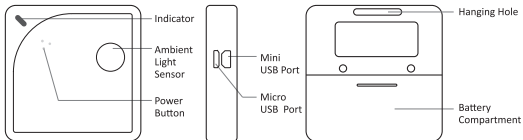


5

1. Device
2. Bracket
3. Adhesive Tape
4. USB Cable \*
5. User Manual

\* Please note, only 4-wire cable as we provided can support data transmission. Some other cables may not work when connecting the PC Tools.

## INTRODUCTION



# DIREKTRONIK

Dataprodukter utöver det vanliga

**TO CHECK IF THE DEVICE IS ON or OFF**

Press the button once. If the device is on, the device will beep and usually the indicator will flash green. If it doesn't beep, the device is off.

**• Switch on**

To switch the device on, press and hold the button for 3 seconds. The device will beep once and the indicator will start blinking green. Release the button and the indicator will turn off after a couple of seconds. The device is now on.

**• Switch off**

To switch the device off, press and hold the button for 3 seconds. The device will beep and the indicator will turn red. Release the button and the indicator will turn off.

**• WiFi setup mode**

Ensure the device is switched off. Press and hold the button for

8 seconds. The device will beep after 3 seconds and again after 8 and the indicator will start flashing alternately red and green. Release the button at this point. NB your device will automatically enter WiFi setup mode the first time it is switched on or following a reset.

- **Reset to default settings**

Switch the device off. Now press and hold the button for at least 15 seconds. Release the button when you hear the 3rd beep and when the indicator is constantly flashing red. The indicator will continue to flash for about 30 seconds. Then the device will automatically enter WiFi setup mode.



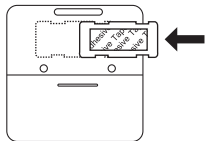
**WHEN YOU RESET YOUR DEVICE, ANY STORED DATA WILL BE DELETED. BEFORE YOU RESET THE DEVICE, PLEASE SYNCHRONISE YOUR DATA MANUALLY, OR EXPORT IT TO YOUR COMPUTER.**

- **Manual data synchronisation**

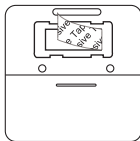
When the device is switched on, press the button once to trigger manual data synchronisation. The indicator will flash green while the data is being transferred. If the server cannot be contacted, the indicator will flash red once.

## MOUNTING INSTRUCTIONS

### Method 1: Sticking on a surface



Step1



Step2

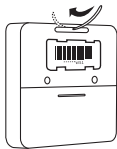


Step3

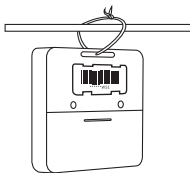
## MOUNTING INSTRUCTIONS

English

### Method 2: Hanging up



Step1



Step2

## CARING FOR YOUR DEVICE

- Please follow the instructions in this manual to properly configure and operate the device.
- The device is not waterproof. Please keep away from water during operation, storage and shipping. For using outdoor or in extreme conditions, please contact us or our distributors for links of external waterproof probe.
- Keep away from acidic, oxidising, flammable or explosive substances.
- Mount the device on a stable surface. When handling the device, avoid using excessive force and never use sharp instruments to pry and open it.

## Option 1: Using mobile App

### STEP 1.

Download the App from [www.ubibot.com/setup](http://www.ubibot.com/setup)

Or

Search for “UbiBot” on the App Store or Google Play.

Please follow the on-screen instructions for step by step guidance. If you failed to set up via the app, you can also try with the PC Tools, which is more professional but easier to operate.

### STEP 2.

Launch the App and log in. On the home page, tap the "+" to start adding your device. Then please follow the in-app instructions to complete the setup. You can also view the demonstration video at [www.ubibot.com/setup](http://www.ubibot.com/setup) for step by step guidance.



We recommend you try to use the PC Tools when the App setup fails, because the failure may be due to mobile phone compatibility. The PC Tools is much easier to operate and suitable for both Macs and Windows.

### Option 2: Using PC Tools

#### STEP 1.

Download the tool from [www.ubibot.com/setup](http://www.ubibot.com/setup)

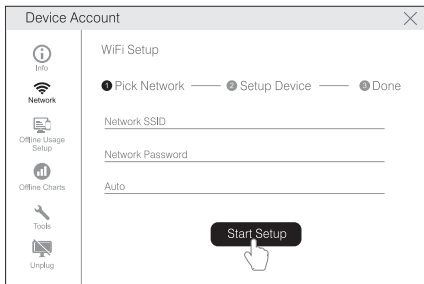
This tool is also helpful in checking setup failure reasons, MAC address, and offline charts. You can also use it to export offline data stored in the device internal memory.

#### STEP 2.

Launch the App and log in. With the device switched on, use the Micro USB cable provided to connect your device via Micro USB port to the computer. The Tools will automatically scan your device and enter device page.

#### STEP 3.

Click “Network” on the left menu bar. There you are able to set up the device on WiFi.











- \* After setting up, you can view the sensor readings as well as configure your device via our app and web console (<http://console.ubibot.com>). You can find and watch the demonstration videos of creating alert rules, setting data sync interval at [www.ubibot.com/setup](http://www.ubibot.com/setup).



## TECHNICAL SPECIFICATIONS

English

-  Batteries: 2 x AA (alkaline battery recommended, not included)
-  Ports: 1 x Mini USB, 1 x Micro USB
-  Built-in memory: 300,000 sensor readings
-  WiFi frequency: 2.4GHz, channels 1-13
-  Materials: Flame resistant ABS & PC
-  Internal sensors: temperature, humidity, ambient light, vibration
-  External sensor: supports DS18B20 temperature probe (optional extra)
-  Optimal operation and storage conditions: -20°C to 60°C (-4°F to 140°F), 10% to 90% RH (No condensation)

\* The sensor precision can be affected by extreme environmental conditions even with suitable batteries. We recommend you avoid using it outside the optimal operational conditions listed above.

## 1. Failure to setup the device via the UbiBot App

There are several factors that will affect the setup process.

The followings are common issues:

- WiFi setup mode: make sure you turn on the WiFi setup mode. (The device indicator flashes alternately red and green).
- WiFi frequency: The WS1 can only connect to 2.4GHz networks, channels 1-13.



- WiFi password: Go through the WiFi setup again to ensure that you have set the correct WiFi password.
- WiFi security type: The WS1 supports OPEN, WEP, or WPA/WPA2 types.

- e) WiFi channel width: Make sure it is set to 20MHz or "Auto".
- f) Battery problems: WiFi uses a lot of power. Your device may be able to power on but may not have enough power for the WiFi. Try replacing the batteries.
- g) Try with the PC Tools. This tool is much easier to operate and can return specific errors.

## 2. View the data when there is no WiFi connection

In the situations where your WiFi network is down, the device continues to collect environmental data and store it in its internal memory.

There are three ways to access the data on the device without a WiFi connection:

- a) Move the device to an area where there is a WiFi connection which the device can connect to. Press the button to trigger a manual data sync. The indicator should flash green for a few seconds. You can now take the device back to the

measurement location (Recommended).

- b) Use your mobile phone and enable Internet Connection Sharing. This can work well in situations where your devices are installed in an area with limited or no WiFi coverage.
- c) Use a laptop and the Micro USB cable to connect to the device manually. You can now perform a data export to your computer using the PC Tools.

### 3. Failure to sync data

Please check the following things:

- a) Check that the device is powered on. Press the button and listen for a beep. If the indicator flashes green, then the sync is working. If it flashes red once then there is another problem. Try the next steps.
- b) Check that the device has sufficient battery power for the WiFi to work. WiFi takes a lot of power- the device may be on, but unable to connect to the WiFi. Please try to plug the

device to USB power or change a new pair of batteries, then press the power button to manually sync data.

- c) Make sure your device's WiFi router has a working Internet connection (for instance, try to access [www.ubibot.com](http://www.ubibot.com) using a mobile connected to the same WiFi).



- d) Check that the WiFi connection is working properly, if need be, go through the WiFi setup again.
- e) If your WiFi password has changed or you move the device to a new WiFi environment, you need to go through the WiFi setup again.

### 4. The PC Tools failed to recognise the device

- a) Please check if you are using the USB cable provided in the packaging. Some other USB cable is not **4-wire** which cannot offer data transmission.
- b) Please remove the splitter if there is one connected.

## TECHNICAL SUPPORT

The UbiBot team is glad to hear your voice of our products and services.

For any questions or suggestions, please feel free to create a ticket in the UbiBot app. Our customer service representatives respond within 24 hours and often in less than an hour. You can also contact the local distributors in your country for localized service. Please go to our website to view their contacts.

## LIMITED WARRANTY

English

1. This device is warranted to be free of defects in materials and workmanship for a period of up to one year from the original purchase date. To claim under this limited warranty and to obtain warranty service, please contact customer service or local distributor to obtain instructions on how to pack and ship the product to us.
2. The following situations will not be covered by the warranty:
  - ① Issues arising after the warranty period has ended.
  - ② Malfunction or damage caused by improper handling or not operating the device according to the instructions.
  - ③ Damage occurring from operating device outside the recommended temperature and humidity range, damage from contact with water, damage from applying excessive force to the device or any cables and connectors.
  - ④ Natural wear and aging of materials. Failure or damage caused by unauthorized removal of the product.
  - ⑤ We are only liable for faults due to manufacturing or design.
  - ⑥ We are not responsible for damage caused by Force Majeure or acts of God.

