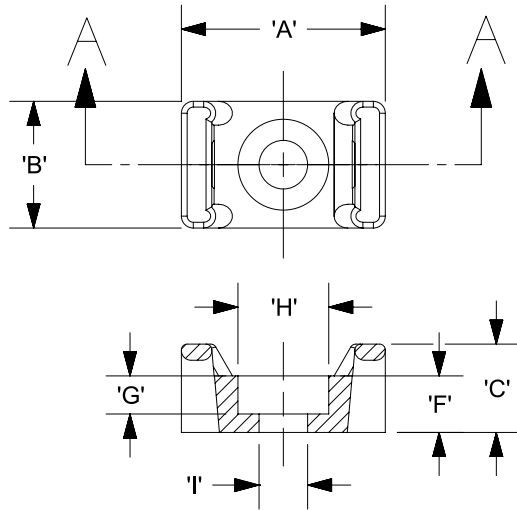
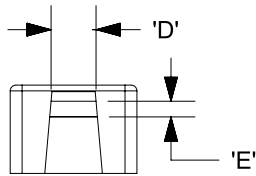


THIS COPY IS PROVIDED ON A RESTRICTED BASIS AND IS NOT TO BE USED IN ANY WAY DETRIMENTAL TO THE INTERESTS OF PANDUIT CORP.

PANDUIT PART NO. *	MATERIAL SUFFIX	RECOMMENDED FASTENER	'A'	'B'	'C'	'D'	'E'	'F'	'G' REF.	'H' REF.	'I' REF.	USE WITH THESE CABLE TIE CROSS SECTIONS	WEIGHT (g) lbs/100 pcs.
TM2S6	NONE -0 -30 -69	#6 (M3) SCREW	0.630 [16.00]	0.425 [10.725]	0.275 [6.985]	0.215 [5.460]	0.060 [1.525]	0.155 [3.937]	0.090 [2.3]	0.286 [7.26]	0.151 [3.84]	MINIATURE INTERMEDIATE STANDARD	0.126 [57.0]
TM2S8	NONE -0 -30 -69	#8 (M4) SCREW							0.105 [2.7]	0.332 [8.43]	0.176 [4.47]		



SECTION A - A



MATERIAL SUFFIX	MATERIAL
NONE	NYLON 6/6
-0	WEATHER RESISTANT NYLON
-30	HEAT STABILIZED NYLON
-69	FLAME RETARDANT NYLON

NOTES;

- *1. SEE CURRENT PRICE SHEET FOR PART NUMBER SUFFIX DESIGNATION FOR PACKAGE SIZE.
- *2. HOLE DIMENSIONS SHOULD ACCOMMODATE SPECIFIED RECOMMENDED FASTENER.
- *3. BAG MAY CONTAIN EXTRA PIECES TO COMPENSATE FOR VARIANCE IN THE PACKAGING PROCESS. PANDUIT ASSURES MINIMUM PIECE COUNT AS STATED ON THE BAG.



REV	DATE	BY	CHK	APR	DESCRIPTION	ECN	TITLE	MATERIAL:
							TM2S TIE MOUNT	SEE TABLE
							CUSTOMER DRAWING	
							ITEM REVISION NAME	
							G03597JV/01	
							DATASET FILE NAME	
							G03597JV_GB0239EM_07/01B	
							UNLESS OTHERWISE SPECIFIED, DIMENSIONAL TOLERANCES ARE: IN [mm]	
7	4/19/2021	RVU	RMHI	JADE	ADDED NOTE 3. UPDATED TEMPLATE DWG.	GAECN05805	.x ± .05 [1.3] .xxx ± .010 [.25]	
6	1/13/2021	LGG			ADDED 120 MATERIAL BACK TO DRAWING.	GB0239EM	.xx ± .02 [0.5] ANGLES ± 5 °	
							THIRD ANGLE PROJECTION	DRAWING NUMBER: GB0239EM
							DRAWN BY: AJV DATE: 12/17/96	SHT 1 OF 1
							CHK: JADE SCALE: NONE	SIZE: A

D10100DA/20