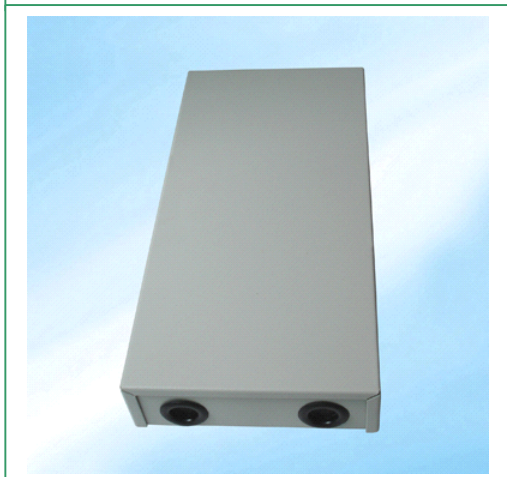


Fiber Optic Terminal Box



Model: 04-4315

It is made of cold-roll steel box, small size, with plastic splice tray inside. It provides an economical way for terminating small optical fiber

Features:

- Non-sealed type, fixed by bolt.
- Four (24C) cable ports for indoor cable connection
- Easy for operation, has high containing ability for surplus pigtails
- Can connect/reconnect to adapters more than 200 times
- Connector for FC, SC, ST or LC
- Max. Capacity: 24 fibers
- Dimension: 28x14x4.4cm (L X W X H)
- Weight: 2.2kg

Applications:

- Suitable for Pigtail, ribbon and bunch cable connectors distribution
- Used in wall installation