

# LAN CONNECTION CONFIGURATION MANUAL

## CHOOSE YOUR OPERATING SYSTEM

1. Windows XP.....	2
2. Windows Vista.....	4
3. Windows 7.....	5
4. Windows 8/8.1/10.....	7

## TRUBLESHOOTING

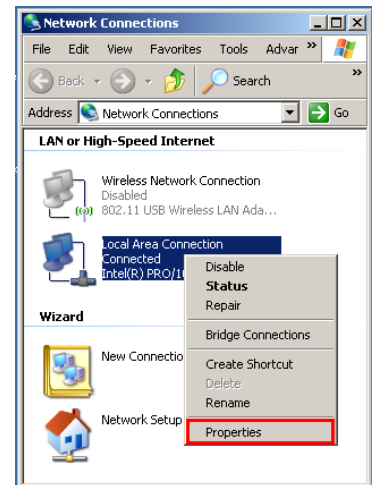
1. Searching for devices in the local area network .....	9
--	---

## 1. WINDOWS XP

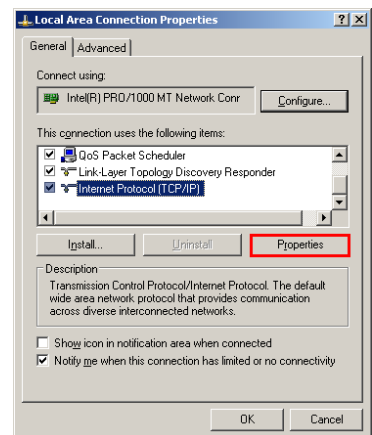
- For the Classic view of the "Start" menu, from "Start" select „Settings”, and then „Control Panel” or directly click on "Control Panel". In "Control Panel" select „Switch to Classic View” from the menu on the left, and then open "Network Connections”.

- In the „Network Connections” window right-click on „Local Area Connection”, and next select „Properties” from the menu.

**NOTICE:** Please, check if „Local Area Connection” is the only active connection. Please, disconnect other network adapters/the Internet (Wireless Network Connection, the mobile Internet) – right-click on the given connection, and then select "Disable” from the menu.

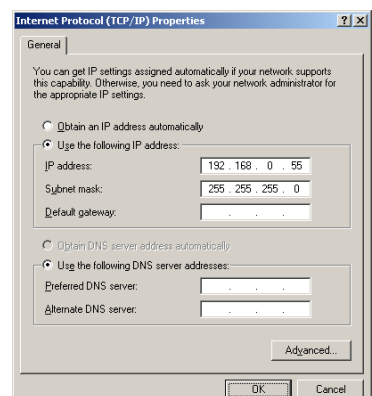


- In the new window select „Internet Protocol (TCP/IP)”, and then click the „Properties” button.



- Select the option: "Use the following IP address" and complete the following fields:

- IP address: 192.168.0.55
- Subnet mask: 255.255.255.0



Leave the other fields empty, and confirm the changes with the „OK” button.

**NOTICE:** If, on the network adapter, the IP, DNS, etc address is already set, you should write it down to be able to return to the previous settings.

5. After setting the network adapter properly, connect the display to the power source, and next connect the network cable to the network adapter in the computer.

## 2. WINDOWS VISTA

1. From the „*Start*” menu (bottom left-hand corner) select “*Control Panel*”. In the control panel choose Classic view (menu on the left), and then double-click on “*Network and Sharing Center*”.
2. From the menu on the left select „*Manage network connections*”.
3. Select „*Local Area Connection*”, and then right-click and choose „*Properties*”.

**NOTICE:** Please check if „*Local Area Connection*” is the only active connection. Please, disconnect other network adapters/the Internet (Wireless Network Connection, the mobile Internet) – right-click on the given connection, and then select “*Disable*” from the menu.

4. In the „*Local Area Connection Properties*” window click on „*Internet Protocol Version 4 (TCP/IPv4)*”, and then click the “*Properties*” button.
5. Select the option “*Use the following IP address*” and complete the following fields:
  - IP address: 192.168.0.55
  - Subnet mask: 255.255.255.0

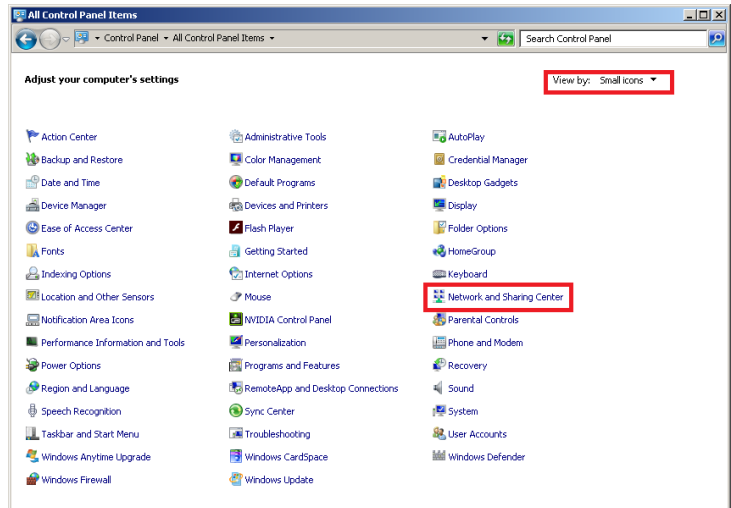
Leave the other fields empty, and confirm the changes with the „*OK*” button.

**NOTICE:** If, on the network adapter, the IP, DNS, etc address is already set, you should write it down to be able to return to the previous settings.

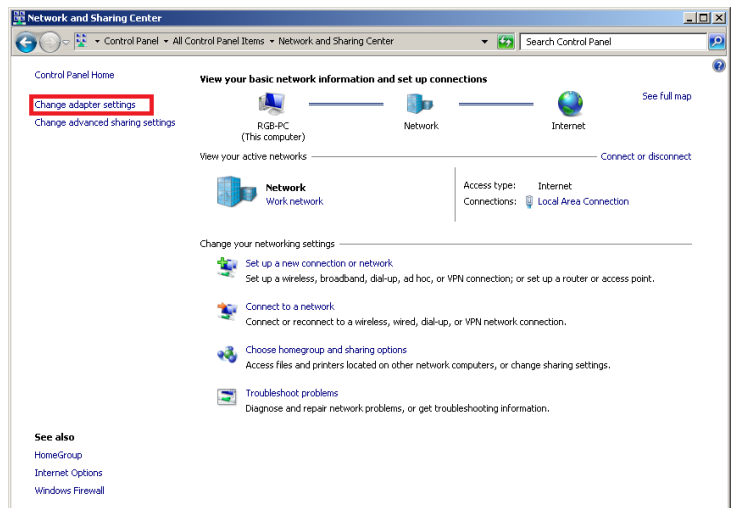
6. After setting the network adapter properly, connect the display to the power source, and next connect the network cable to the network adapter in the computer.

### 3. WINDOWS 7

- From the „Start” menu (bottom left-hand corner) select *“Control Panel”*. In the control panel, in the top right-hand corner, select the *“View by: Small icons”* option, and then click on *“Network and Sharing Center”*.

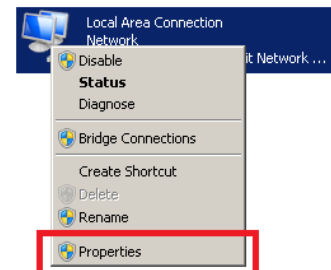


- From the menu on the left choose *„Change adapter settings”*.

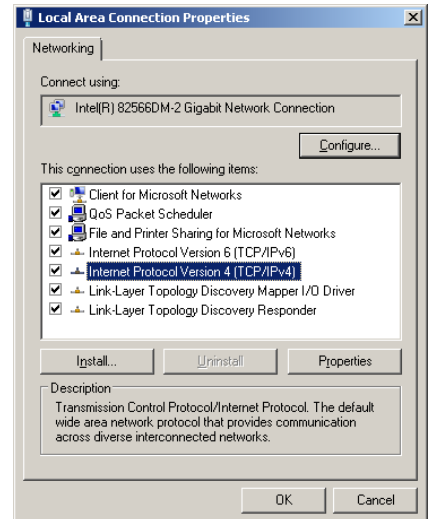


- Right-click on *„Local Area Connection”*, and then select *„Properties”*.

**NOTICE:** Please, check if *„Local Area Connection”* is the only active connection. Please, disconnect other network adapters/the Internet (Wireless Network Connection, the mobile Internet) – right-click on the given connection, and then select *“Disable”* from the menu.



- In the „Local Area Connection Properties” window click on „Internet Protocol Version 4 (TCP/IPv4)”, and then click the “Properties” button.

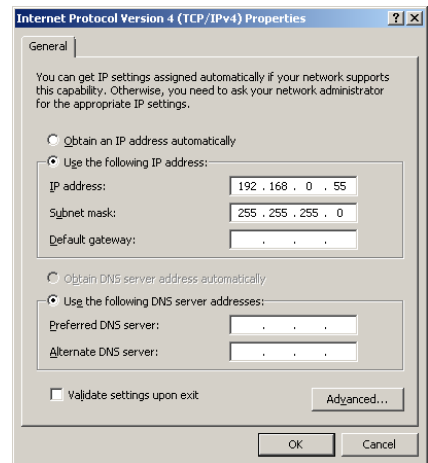


- In the „Internet Protocol Version 4 (TCP/IPv4) Properties” window select the option „Use the following IP address” and complete the following fields:

- IP address: 192.168.0.55
- Subnet mask: 255.255.255.0

Leave the other fields empty, and confirm the changes with the „OK” button.

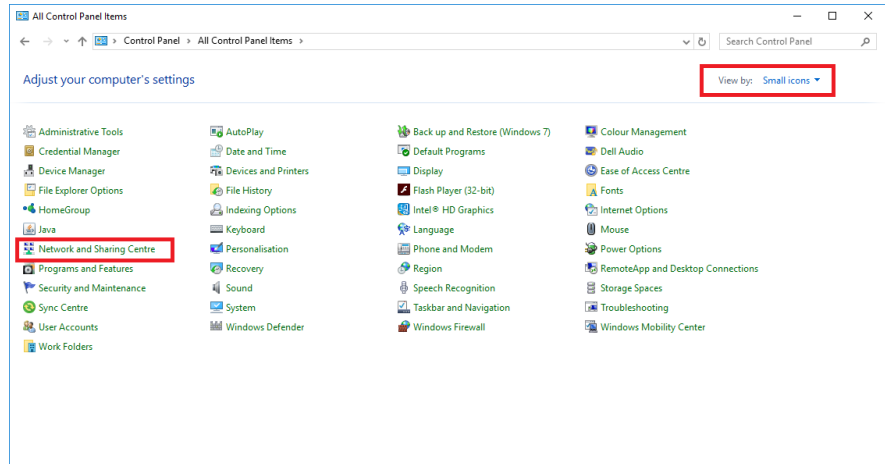
**NOTICE:** If, on the network adapter, the IP, DNS, etc address is already set, you should write it down to be able to return to the previous settings.



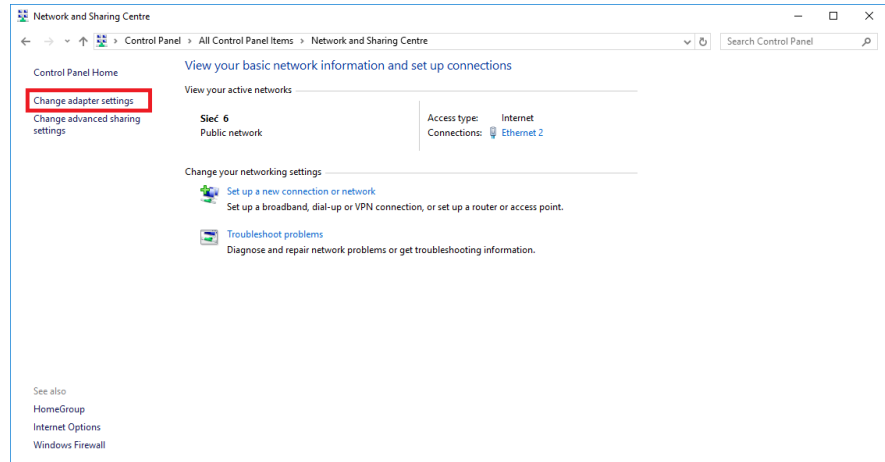
- After setting the network adapter properly, connect the display to the power source, and next connect the network cable to the network adapter in the computer.

## 4. WINDOWS 8/8.1/10

1. Right-click the „Start” button (bottom left-hand corner) and select “Control Panel” from the list. In the control panel, in the top right-hand corner, select the “View by: Small icons” option, and then click on “Network and Sharing Center”.

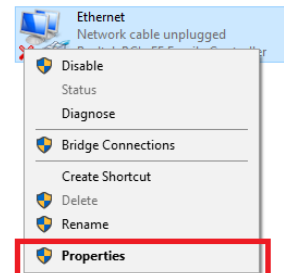


2. From the menu on the left select „Change adapter settings”.

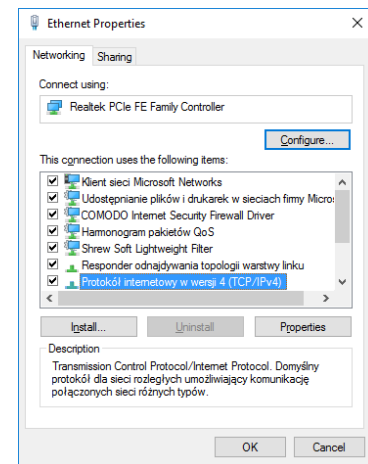


3. Right-click on „Ethernet” (Local Area Connection), and then select „Properties”.

**NOTICE:** Please check if „Local Area Connection” is the only active connection. Please, disconnect other network adapters/the Internet (Wireless Network Connection, the mobile Internet) – right-click on the given connection, and then select “Disable” from the menu.



- In the properties window select „Internet Protocol Version 4 (TCP/IPv4)”, and then click the “Properties” button.

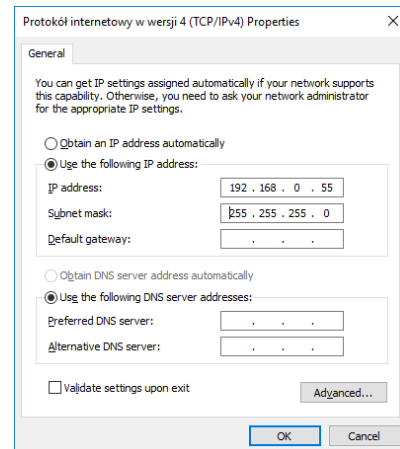


- In the „Internet Protocol Version 4 (TCP/IPv4) Properties” window, select the option “Use the following IP address”, and then complete the following fields:

- IP address: 192.168.0.55
- Subnet mask: 255.255.255.0

Leave the other fields empty, and confirm the changes with the „OK” button.

**NOTICE:** If, on the network adapter, the IP, DNS, etc address is already set, you should write it down to be able to return to the previous settings.



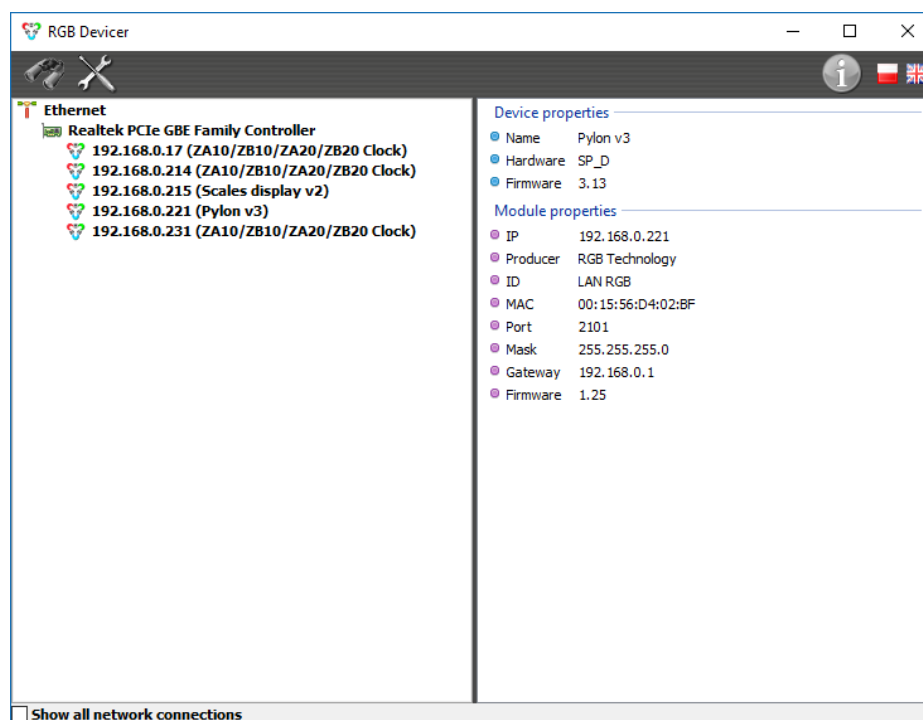
- After setting the network adapter properly, connect the display to the power source, and next connect the network cable to the network adapter in the computer.



## TROUBLESHOOTING

### SEARCHING FOR DEVICES IN THE LOCAL AREA NETWORK

1. The display supplied by the manufacturer has a default IP address: 192.168.0.11 already set. Such IP address should be entered in the setup of the program used for the connection with the display (especially if it is a newly purchased product). If there is a connection problem or if the IP address has been changed and you are not sure what it is like now, you should use the **RGB Devicer2** program. The program searches for the RGB Technology devices in the local area network. The program is available at <http://rgbtechnology.pl/soft/>.
2. To search for the display, launch the RGB Devicer2 program. The program will automatically start searching the network.



In the top left-hand part of the window, the display IP address should appear.

If the message: „Socket error” appears, shut down the program and restart it right-clicking on the program icon and selecting: „Run as administrator”.

**NOTICE:** The program searches for the RGB Technology devices in the local area network by searching the subnet defined by the IP address and the mask, both set in the network connection of the computer. If the IP address of the display has been changed, set, in the computer network adapter, the IP address also belonging to the same subnet, but of course other than the IP address of the display.

3. If you experience problems with connecting with the display:
  - a) Select „*Show all Network Connections*” and check if the IP address for the given connection is set properly.
  - b) Disable all network connections, especially the wireless connection and the Internet.
  - c) For the time of the connection with the display, disable all programs of the antivirus or firewall type.